

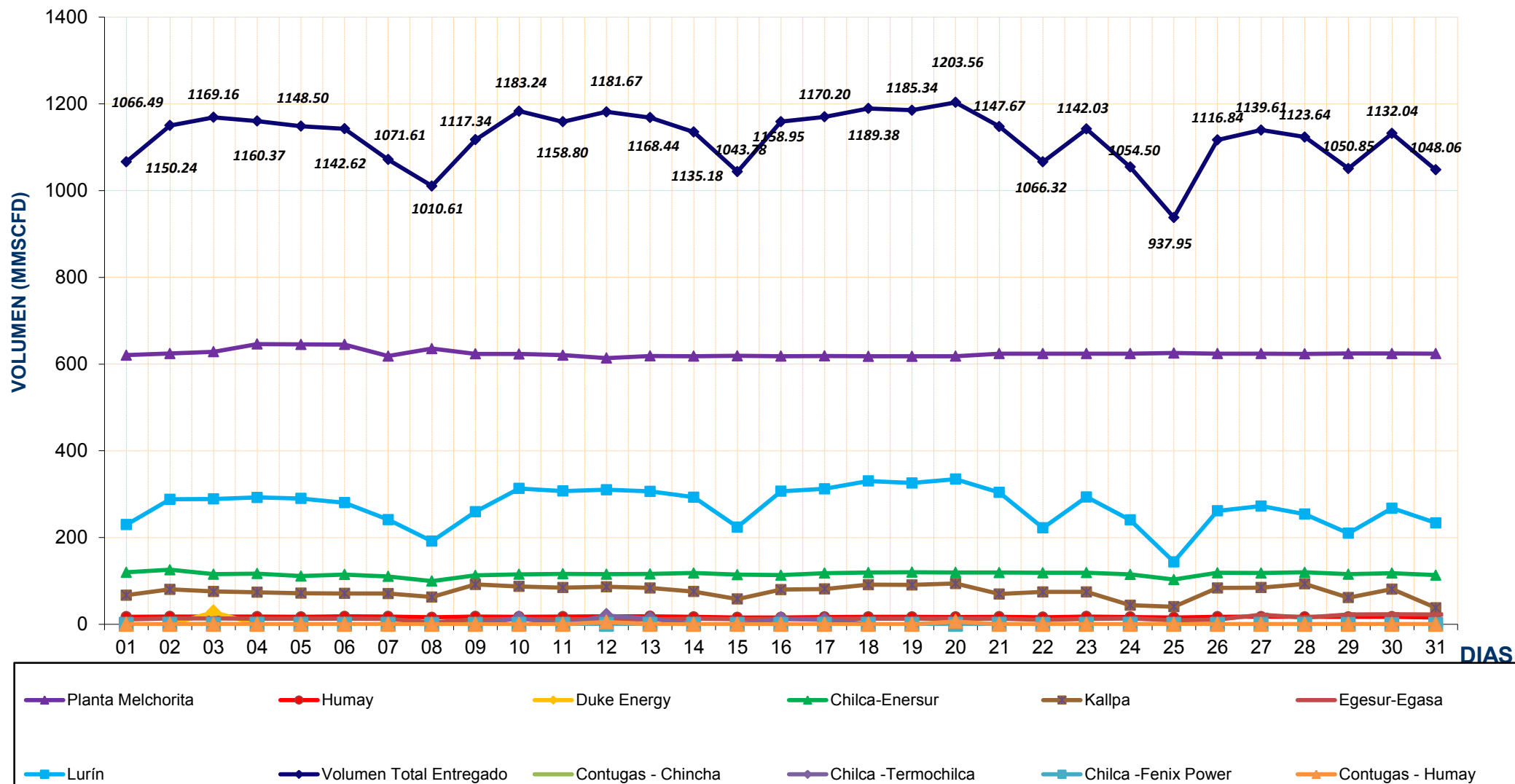
REPORTE DIARIO DE LA OPERACIÓN* DE LOS SISTEMAS DE TRANSPORTE DE GAS NATURAL (GN) Y LÍQUIDOS DE GAS NATURAL (LGN)																
CONCESIONARIO: TRANSPORTADORA DE GAS DEL PERU S.A.																
PERIODO: Diciembre 2013																
Entregas del Sistema de Transporte de Gas Natural (MMSCFD <sup>1</sup> )															Sistema de Transporte de Líquidos de Gas Natural (BPD <sup>2</sup> )	
Días	Ducto Principal PLNG			Ducto TGP										Total Volumen Entregado	Días	Volumen Bombeado Malvinas
	Chiquintirca	C.U.A	Planta Melchorita	Humay	Duke Energy	Enersur	Kallpa	Egasa / Egesur	Chincha - Contugas	Humay - Contugas	Chilca - Termochilca	Chilca - Fenix Power	Lurin			
01-dic-13	877.16	162.07	620.67	17.36	0.00	119.92	67.28	11.27	0.05	0.00	0.00	0.00	229.94	1066.49	01-dic-13	104,596.00
02-dic-13	813.71	184.62	624.37	17.89	0.00	125.67	80.62	13.34	0.06	0.00	0.00	0.00	288.30	1150.24	02-dic-13	102,832.50
03-dic-13	807.67	216.75	628.38	18.03	28.12	115.65	75.71	13.51	0.06	0.00	0.56	0.00	289.17	1169.16	03-dic-13	101,634.00
04-dic-13	815.87	217.27	646.32	17.63	0.00	116.99	73.85	12.98	0.06	0.00	0.00	0.00	292.53	1160.37	04-dic-13	96,160.00
05-dic-13	833.05	222.92	645.34	17.03	0.00	111.33	71.77	12.95	0.06	0.00	0.00	0.00	290.02	1148.50	05-dic-13	88,758.00
06-dic-13	940.99	211.73	645.04	18.29	0.00	114.82	71.13	12.73	0.06	0.00	0.00	0.00	280.55	1142.62	06-dic-13	110,471.00
07-dic-13	826.68	165.16	618.54	18.04	0.00	110.34	70.92	12.26	0.06	0.00	0.00	0.00	241.44	1071.61	07-dic-13	103,919.00
08-dic-13	730.03	34.09	635.62	16.16	0.00	99.79	62.91	4.28	0.05	0.00	0.00	0.00	191.79	1010.61	08-dic-13	99,436.00
09-dic-13	763.55	154.73	623.69	17.88	0.00	112.74	91.76	11.35	0.06	0.00	0.00	0.00	259.85	1117.34	09-dic-13	99,850.00
10-dic-13	805.98	223.23	623.37	17.36	0.00	115.32	87.32	12.32	0.07	0.00	14.10	0.00	313.37	1183.24	10-dic-13	103,433.00
11-dic-13	813.99	222.26	620.75	17.62	0.00	116.26	84.57	12.11	0.06	0.00	0.00	0.00	307.42	1158.80	11-dic-13	102,218.00
12-dic-13	818.43	254.91	613.79	18.25	0.00	115.58	86.52	11.95	0.06	5.23	20.12	0.00	310.16	1181.67	12-dic-13	102,319.00
13-dic-13	849.22	264.64	618.72	18.58	0.00	116.14	83.81	11.30	0.06	0.00	13.32	0.00	306.51	1168.44	13-dic-13	94,896.00
14-dic-13	850.89	237.44	618.13	17.12	0.00	118.28	75.56	12.83	0.06	0.00	0.00	0.00	293.19	1135.18	14-dic-13	92,654.00
15-dic-13	837.13	165.26	618.91	15.78	0.00	114.49	58.39	11.86	0.05	0.00	0.00	0.00	224.29	1043.78	15-dic-13	92,606.00
16-dic-13	839.80	249.62	618.23	15.82	0.00	113.34	80.06	12.22	0.06	0.00	12.48	0.00	306.74	1158.95	16-dic-13	93,124.00
17-dic-13	856.81	265.32	618.77	16.92	0.00	118.05	81.37	12.34	0.06	0.00	10.34	0.00	312.35	1170.20	17-dic-13	90,112.00
18-dic-13	872.09	279.36	618.07	17.18	0.00	119.26	91.26	13.14	0.06	0.01	0.00	0.00	330.41	1189.38	18-dic-13	94,540.00
19-dic-13	883.18	273.56	618.08	17.16	0.00	120.18	90.88	13.08	0.06	0.00	0.00	0.00	325.90	1185.34	19-dic-13	89,383.00
20-dic-13	886.76	281.92	618.31	16.99	0.00	119.69	94.14	13.00	0.06	6.69	0.00	0.00	334.67	1203.56	20-dic-13	92,600.00
21-dic-13	859.87	243.58	624.15	17.27	0.00	119.40	69.77	13.03	0.06	0.00	0.00	0.00	303.99	1147.67	21-dic-13	104,480.50
22-dic-13	835.26	166.51	624.18	16.34	0.00	118.85	74.57	10.10	0.06	0.00	0.00	0.00	222.21	1066.32	22-dic-13	101,170.00
23-dic-13	863.02	234.57	624.01	18.05	0.00	119.11	74.63	12.62	0.06	0.00	0.00	0.00	293.55	1142.03	23-dic-13	103,712.00
24-dic-13	846.57	171.68	624.17	16.93	0.00	115.04	43.93	13.60	0.09	0.00	0.00	0.00	240.74	1054.50	24-dic-13	100,064.50
25-dic-13	762.38	18.95	625.46	15.76	0.00	103.25	40.44	8.94	0.05	0.00	0.00	0.00	144.06	937.95	25-dic-13	101,042.00
26-dic-13	755.09	156.10	624.07	17.45	0.00	118.73	83.96	11.06	0.06	0.00	0.00	0.00	261.52	1116.84	26-dic-13	97,557.00
27-dic-13	758.91	180.32	624.11	17.66	0.00	118.36	84.69	22.05	0.07	0.00	0.00	0.00	272.67	1139.61	27-dic-13	97,630.50
28-dic-13	773.47	194.19	623.69	17.06	0.00	119.86	93.22	15.77	0.07	0.00	0.00	0.00	253.96	1123.64	28-dic-13	97,500.00
29-dic-13	789.31	152.61	624.47	17.01	0.00	115.50	61.45	22.41	0.06	0.00	0.00	0.00	209.94	1050.85	29-dic-13	93,202.50
30-dic-13	799.52	221.66	624.32	17.33	0.00	118.08	81.26	23.12	0.07	0.00	0.00	0.00	267.86	1132.04	30-dic-13	96,842.00
31-dic-13	808.21	165.10	624.23	15.67	0.00	113.54	38.10	22.61	0.09	0.00	0.00	0.00	233.81	1048.06	31-dic-13	102,156.00
<b>TOTAL</b>	<b>25,574.59</b>	<b>6,192.12</b>	<b>19,359.96</b>	<b>533.60</b>	<b>28.12</b>	<b>3,593.58</b>	<b>2,325.88</b>	<b>416.15</b>	<b>1.93</b>	<b>11.92</b>	<b>70.92</b>	<b>0.00</b>	<b>8,432.91</b>	<b>34,774.98</b>	<b>TOTAL</b>	<b>3,050,898.49</b>
<b>PROMEDIO</b>	<b>824.99</b>	<b>199.75</b>	<b>624.51</b>	<b>17.21</b>	<b>0.91</b>	<b>115.92</b>	<b>75.03</b>	<b>13.42</b>	<b>0.06</b>	<b>0.38</b>	<b>2.29</b>	<b>0.00</b>	<b>272.03</b>	<b>1,121.77</b>	<b>PROMEDIO</b>	<b>98,416.08</b>

(\*) Los datos de volúmenes de Gas Natural y Líquidos de Gas Natural son operativos y no necesariamente coinciden con datos fiscalizados.

<sup>1</sup> MMSCFD: Millones de Pies Cubicos Estandar por Día

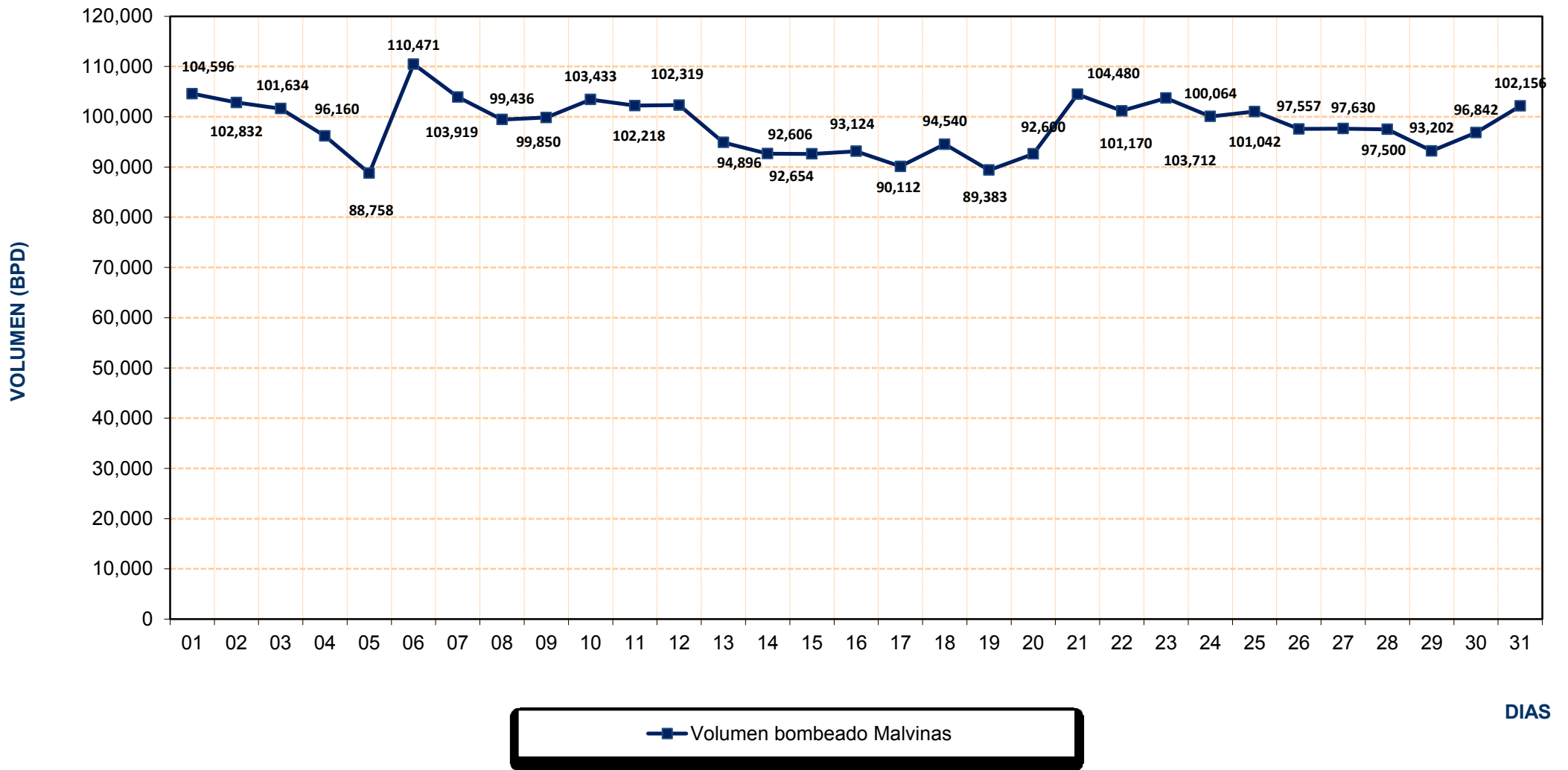
<sup>2</sup> BPD: Barriles Por Día

## REPORTE OPERATIVO\* DEL SISTEMA DE TRANSPORTE DE GAS NATURAL (GN) DURANTE DICIEMBRE 2013



\* Los valores podría diferir del Volumen Fiscalizado.

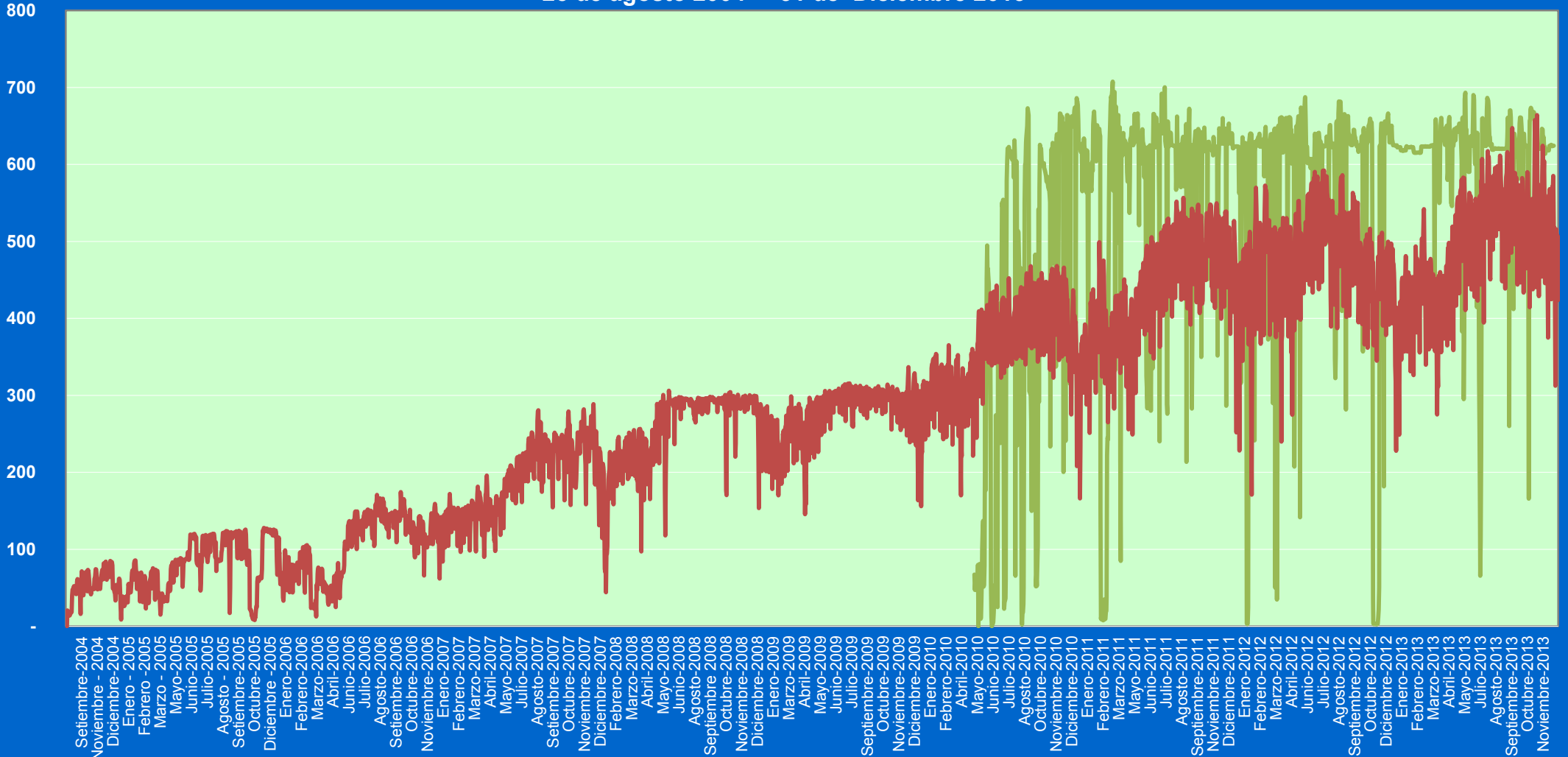
## REPORTE OPERATIVO\* DEL SISTEMA DE TRANSPORTE DE LÍQUIDOS DE GAS NATURAL (LGN) DURANTE DICIEMBRE 2013



\* Los valores podría diferir del Volumen Fiscalizado.

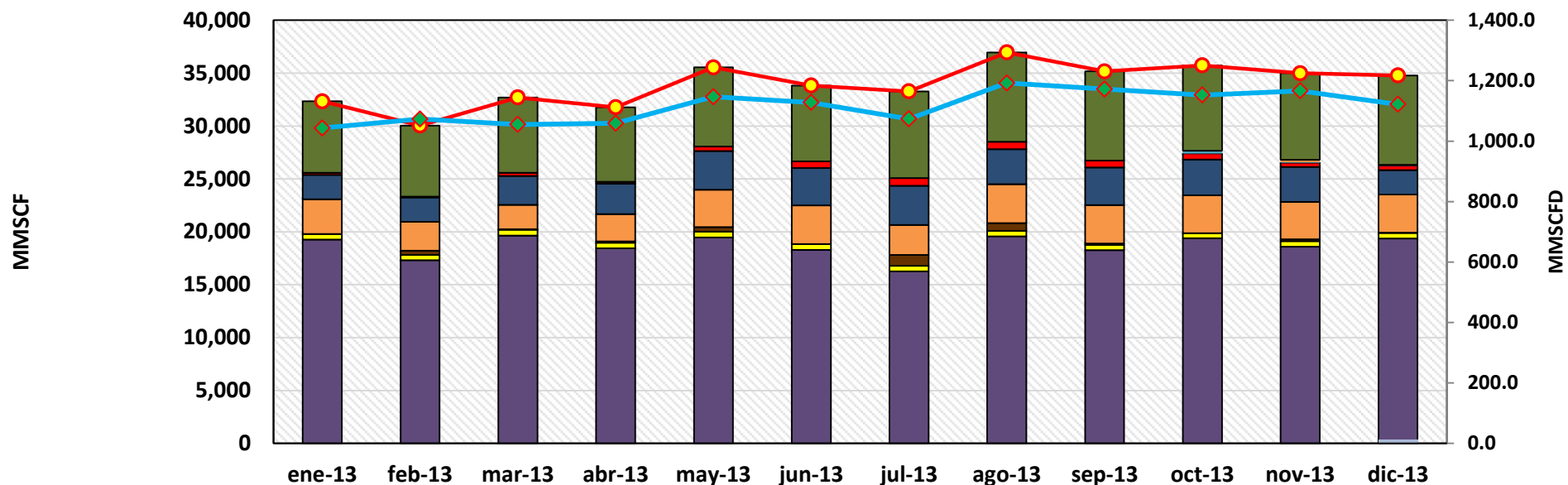
Volumen  
(MMSCFD)

### Volumen de Gas Natural entregado diariamente por TGP en millones de pies cúbicos diarios (MMSCFD) 25 de agosto 2004 - 31 de Diciembre 2013



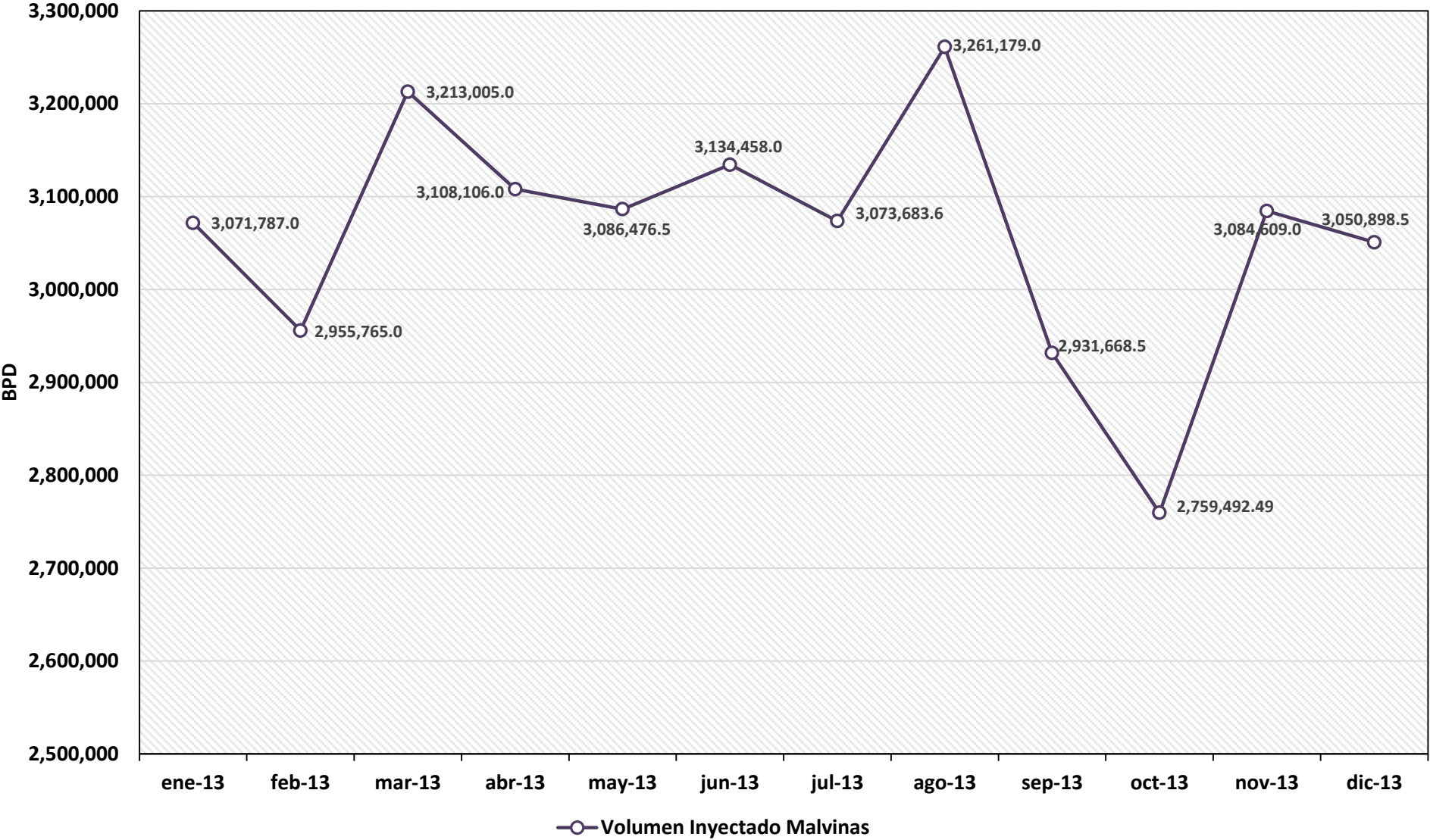
— Planta Melchorita — B.O.O.T

## REPORTE MENSUAL DE VOLUMENES ENTREGADOS EN EL SISTEMA DE TRANSPORTE DE GAS NATURAL (GN) DURANTE EL 2013



	ene-13	feb-13	mar-13	abr-13	may-13	jun-13	jul-13	ago-13	sep-13	oct-13	nov-13	dic-13
Lurín	6,759.9	6,706.8	7,129.4	7,055.3	7,496.1	7,171.9	8,202.1	8,456.6	8,431.6	8,070.2	8,186.3	8,432.9
Chilca - Fenix Power										25.4	219.9	0.0
Chilca - Termochilca										231.2	64.6	70.9
Contugas - Chíncha										0.8	1.6	1.9
Egesur-Egasa	194.9	85.9	287.9	170.5	428.0	639.6	714.7	691.9	665.7	559.3	398.0	416.1
Kallpa	2,305.4	2,306.4	2,736.0	2,862.5	3,644.9	3,523.3	3,707.0	3,297.7	3,558.3	3,383.2	3,310.4	2,325.9
Chilca-Enersur	3,291.7	2,719.9	2,294.1	2,604.6	3,535.9	3,659.7	2,852.2	3,699.1	3,626.3	3,596.6	3,519.3	3,593.6
Duke Energy	29.1	417.9	63.3	106.3	412.3	0.0	1,018.0	709.4	121.5	0.0	180.5	28.1
Humay	501.3	488.9	543.9	525.8	558.2	537.3	519.7	546.4	500.6	479.3	529.4	533.6
Planta Melchorita	19,255.6	17,316.5	19,646.3	18,446.3	19,470.6	18,300.3	16,266.4	19,556.8	18,264.0	19,382.1	18,585.2	19,360.0
Contugas - Humay												11.9
Total Transportado GN	32,337.8	30,042.3	32,700.8	31,771.3	35,546.0	33,831.9	33,280.1	36,957.9	35,168.1	35,728.12	34,995.3	34,775.0
Promedio Total Transportado (MMSCFD)	1,043.2	1,072.9	1,054.9	1,059.0	1,146.6	1,127.7	1,073.6	1,192.2	1,172.3	1,152.52	1,166.51	1,121.77

# REPORTE MENSUAL DE VOLUMENES ENTREGADOS EN EL SISTEMA DE TRANSPORTE DE LIQUIDOS DE GAS NATURAL (LGN) DURANTE EL 2013



**VOLUMEN PROMEDIO DIARIO DE LÍQUIDOS DE GAS NATURAL TRANSPORTADO POR TGP EN  
BARRILES POR DÍA (BPD)  
Agosto 2004 - Noviembre 2013**

