

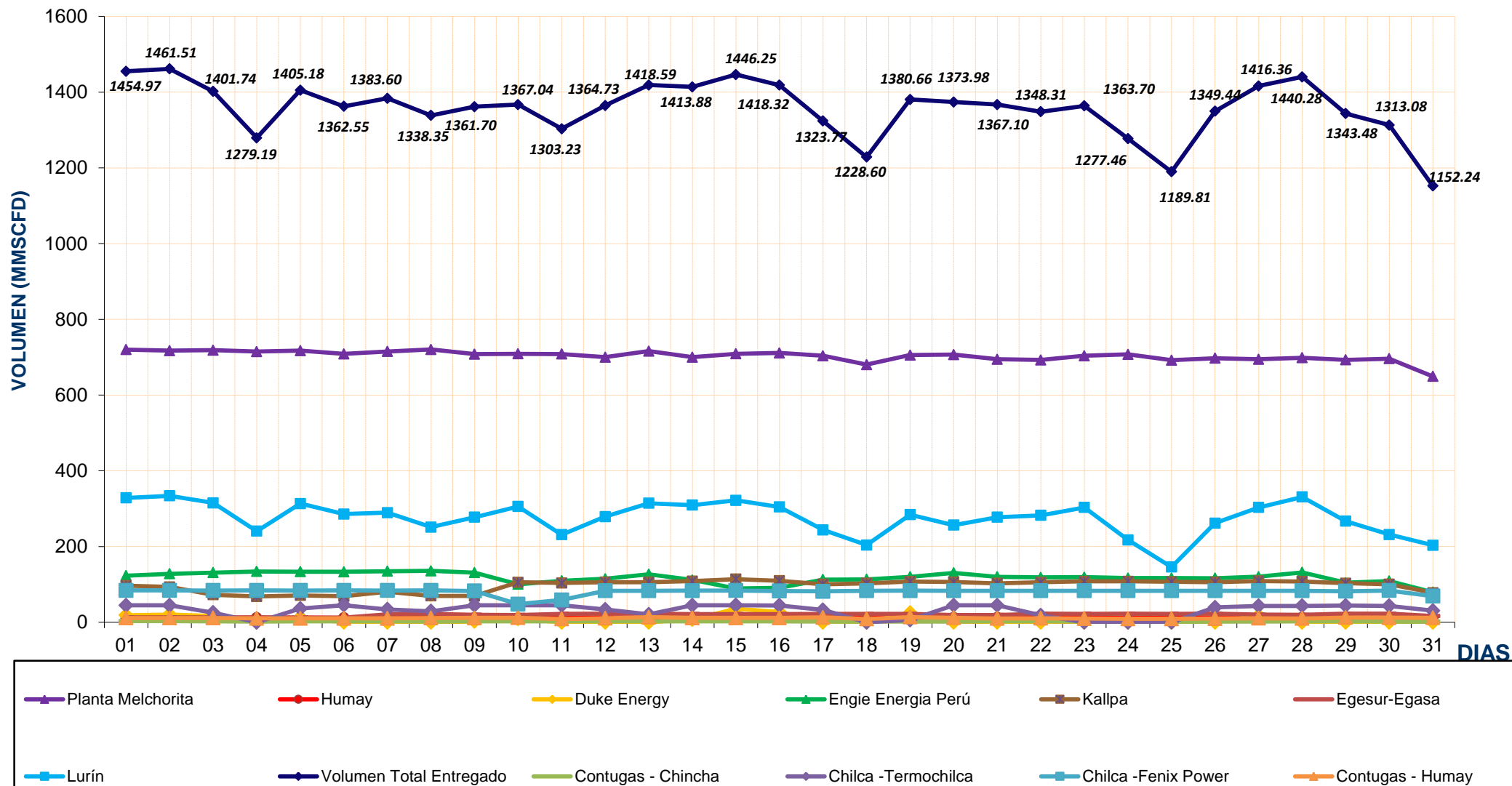
REPORTE DIARIO DE LA OPERACIÓN* DE LOS SISTEMAS DE TRANSPORTE DE GAS NATURAL (GN) Y LÍQUIDOS DE GAS NATURAL (LGN)																
CONCESIONARIO: TRANSPORTADORA DE GAS DEL PERU S.A.																
PERIODO: Diciembre 2016																
Entregas del Sistema de Transporte de Gas Natural (MMSCFD <sup>1</sup> )															Sistema de Transporte de Líquidos de Gas Natural (BPD <sup>2</sup> )	
Días	Ducto Principal PLNG			Ducto TGP										Total Volumen Entregado	Días	Volumen Bombeado Malvinas
	Chiquintirca	C.U.A	Planta Melchorita	Humay	Duke Energy	Engie Energia Peru	Kallpa	Egasa / Egesur	Chincha - Contugas	Humay - Contugas	Chilca - Termochilca	Chilca - Fenix Power	Lurín			
01-dic-16	1104.46	380.29	720.02	12.07	18.71	123.12	96.67	12.85	2.97	11.18	44.78	84.02	328.58	1454.97	01-dic-16	99,249.00
02-dic-16	1107.70	382.00	717.15	11.79	20.40	128.19	93.31	12.83	3.43	11.43	44.82	84.08	334.08	1461.51	02-dic-16	91,198.00
03-dic-16	1059.83	343.73	718.39	11.99	16.51	131.18	72.73	12.75	2.21	11.24	25.49	83.93	315.32	1401.74	03-dic-16	102,844.00
04-dic-16	954.38	244.34	714.80	12.23	0.00	134.35	68.22	12.74	1.96	10.43	0.02	84.01	240.43	1279.19	04-dic-16	99,857.00
05-dic-16	1030.05	320.73	717.37	12.38	12.08	133.68	71.03	12.65	2.50	10.25	36.15	83.70	313.39	1405.18	05-dic-16	93,924.00
06-dic-16	1019.22	298.97	708.56	12.03	0.00	133.27	68.63	12.45	2.40	10.35	45.05	84.16	285.66	1362.55	06-dic-16	93,957.00
07-dic-16	1015.30	317.35	715.12	12.08	0.00	134.79	80.37	21.08	2.49	10.22	34.02	83.87	289.59	1383.60	07-dic-16	98,282.00
08-dic-16	1042.75	282.90	720.33	12.18	0.01	135.77	69.67	22.27	2.19	11.26	29.12	84.14	251.42	1338.35	08-dic-16	99,074.00
09-dic-16	1019.71	312.42	708.12	11.95	1.98	131.14	69.36	19.84	2.65	11.51	44.89	82.68	277.58	1361.70	09-dic-16	99,773.00
10-dic-16	1025.59	309.08	708.93	11.33	8.68	100.55	105.50	19.33	2.43	11.89	44.78	47.78	305.84	1367.04	10-dic-16	89,912.50
11-dic-16	973.06	272.54	708.28	13.03	0.00	109.55	103.81	22.44	2.31	8.67	44.72	59.04	231.39	1303.23	11-dic-16	108,512.00
12-dic-16	953.72	297.35	699.99	12.09	0.00	114.77	106.01	22.91	2.52	10.58	33.74	83.23	278.89	1364.73	12-dic-16	100,099.00
13-dic-16	1068.07	328.51	716.17	12.09	0.00	126.95	106.07	22.67	2.68	13.55	20.95	83.19	314.26	1418.59	13-dic-16	99,880.00
14-dic-16	1092.28	364.41	700.07	12.37	7.29	111.77	108.60	21.71	2.58	11.58	44.93	83.53	309.46	1413.88	14-dic-16	99,649.50
15-dic-16	1110.74	378.81	708.99	12.32	35.81	88.89	113.85	21.63	2.60	11.54	44.94	83.70	321.99	1446.25	15-dic-16	99,521.00
16-dic-16	1089.87	363.53	711.29	12.03	27.31	90.96	109.56	21.60	2.42	11.74	44.39	82.52	304.50	1418.32	16-dic-16	97,977.00
17-dic-16	792.09	273.22	703.81	11.92	0.00	112.58	100.28	22.03	1.95	12.91	32.63	81.74	243.92	1323.77	17-dic-16	90,183.00
18-dic-16	1086.38	248.93	680.29	11.92	0.00	113.31	102.95	22.10	1.89	8.74	0.00	83.33	204.06	1228.60	18-dic-16	97,203.00
19-dic-16	1020.81	321.11	705.62	11.11	24.75	120.15	107.45	22.04	2.19	13.73	5.90	83.52	284.21	1380.66	19-dic-16	85,234.00
20-dic-16	1039.64	327.19	706.88	12.72	0.00	130.61	106.19	19.09	2.20	11.95	44.65	83.17	256.52	1373.98	20-dic-16	111,057.00
21-dic-16	1062.13	334.00	694.55	12.52	0.00	120.24	102.92	19.26	2.40	9.99	44.70	83.11	277.41	1367.10	21-dic-16	102,129.00
22-dic-16	1021.56	325.24	692.69	12.11	0.00	118.45	105.49	22.53	2.53	10.56	18.49	83.19	282.26	1348.31	22-dic-16	98,780.00
23-dic-16	961.83	306.70	703.76	11.94	0.00	119.20	108.16	22.31	2.12	9.63	0.00	83.28	303.29	1363.70	23-dic-16	96,708.00
24-dic-16	952.84	255.11	707.61	11.71	0.00	116.84	108.01	22.55	0.79	9.12	0.01	83.35	217.47	1277.46	24-dic-16	84,395.00
25-dic-16	927.26	202.38	692.19	12.54	0.00	116.60	106.82	22.49	0.78	9.14	0.00	83.22	146.03	1189.81	25-dic-16	113,081.00
26-dic-16	991.18	294.72	697.28	11.62	0.00	116.37	106.06	22.54	1.69	9.64	39.14	83.24	261.87	1349.44	26-dic-16	88,698.50
27-dic-16	1026.82	356.64	694.68	11.72	17.75	120.53	108.97	20.07	2.20	10.55	43.37	83.17	303.36	1416.36	27-dic-16	90,139.00
28-dic-16	1077.37	373.91	698.52	12.96	0.00	131.65	107.77	19.62	2.24	10.15	43.37	83.13	330.87	1440.28	28-dic-16	106,918.00
29-dic-16	1064.18	338.65	692.87	12.52	0.00	104.30	103.07	22.69	2.25	12.61	44.22	81.96	266.98	1343.48	29-dic-16	98,682.00
30-dic-16	977.14	289.79	695.94	12.30	0.00	108.90	100.28	22.80	2.11	12.05	43.21	83.82	231.68	1313.08	30-dic-16	99,689.00
31-dic-16	875.56	211.96	649.51	11.84	0.00	79.48	78.09	16.62	1.45	11.94	30.76	69.11	203.44	1152.24	31-dic-16	95,741.00
<b>TOTAL</b>	<b>31,543.53</b>	<b>9,656.52</b>	<b>21,809.79</b>	<b>375.38</b>	<b>191.29</b>	<b>3,658.14</b>	<b>2,995.88</b>	<b>610.47</b>	<b>69.11</b>	<b>340.13</b>	<b>973.25</b>	<b>2,509.89</b>	<b>8,515.76</b>	<b>42,049.10</b>	<b>TOTAL</b>	<b>3,032,346.50</b>
<b>PROMEDIO</b>	<b>1,017.53</b>	<b>311.50</b>	<b>703.54</b>	<b>12.11</b>	<b>6.17</b>	<b>118.00</b>	<b>96.64</b>	<b>19.69</b>	<b>2.23</b>	<b>10.97</b>	<b>31.40</b>	<b>80.96</b>	<b>274.70</b>	<b>1,356.42</b>	<b>PROMEDIO</b>	<b>97,817.63</b>

(\*) Los datos de volúmenes de Gas Natural y Líquidos de Gas Natural son operativos y no necesariamente coinciden con datos fiscalizados.

<sup>1</sup> MMSCFD: Millones de Pies Cúbicos Estandar por Día

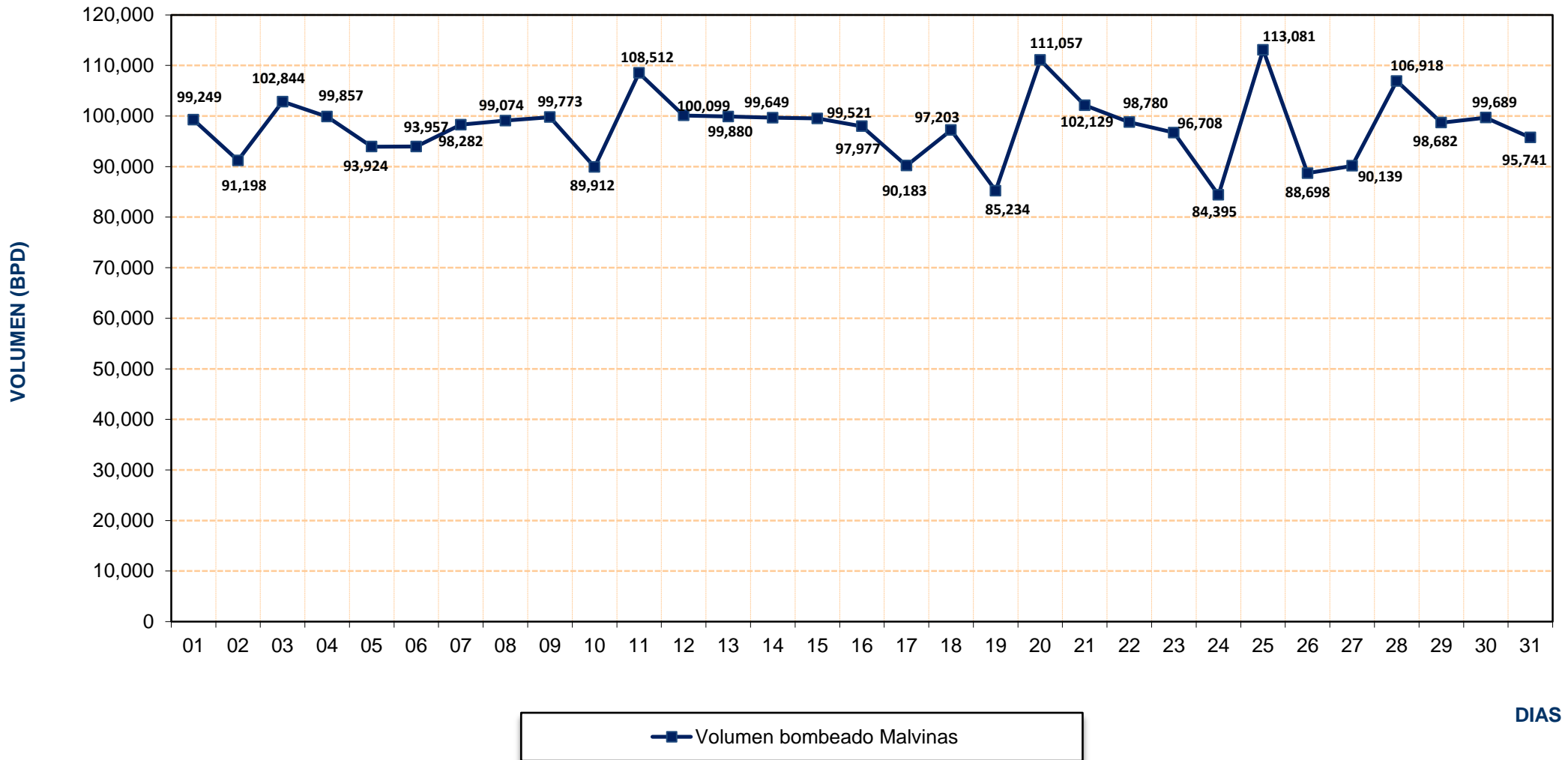
<sup>2</sup> BPD: Barriles Por Día

## REPORTE OPERATIVO\* DEL SISTEMA DE TRANSPORTE DE GAS NATURAL (GN) DURANTE DICIEMBRE 2016



\* Los valores podría diferir del Volumen Fiscalizado.

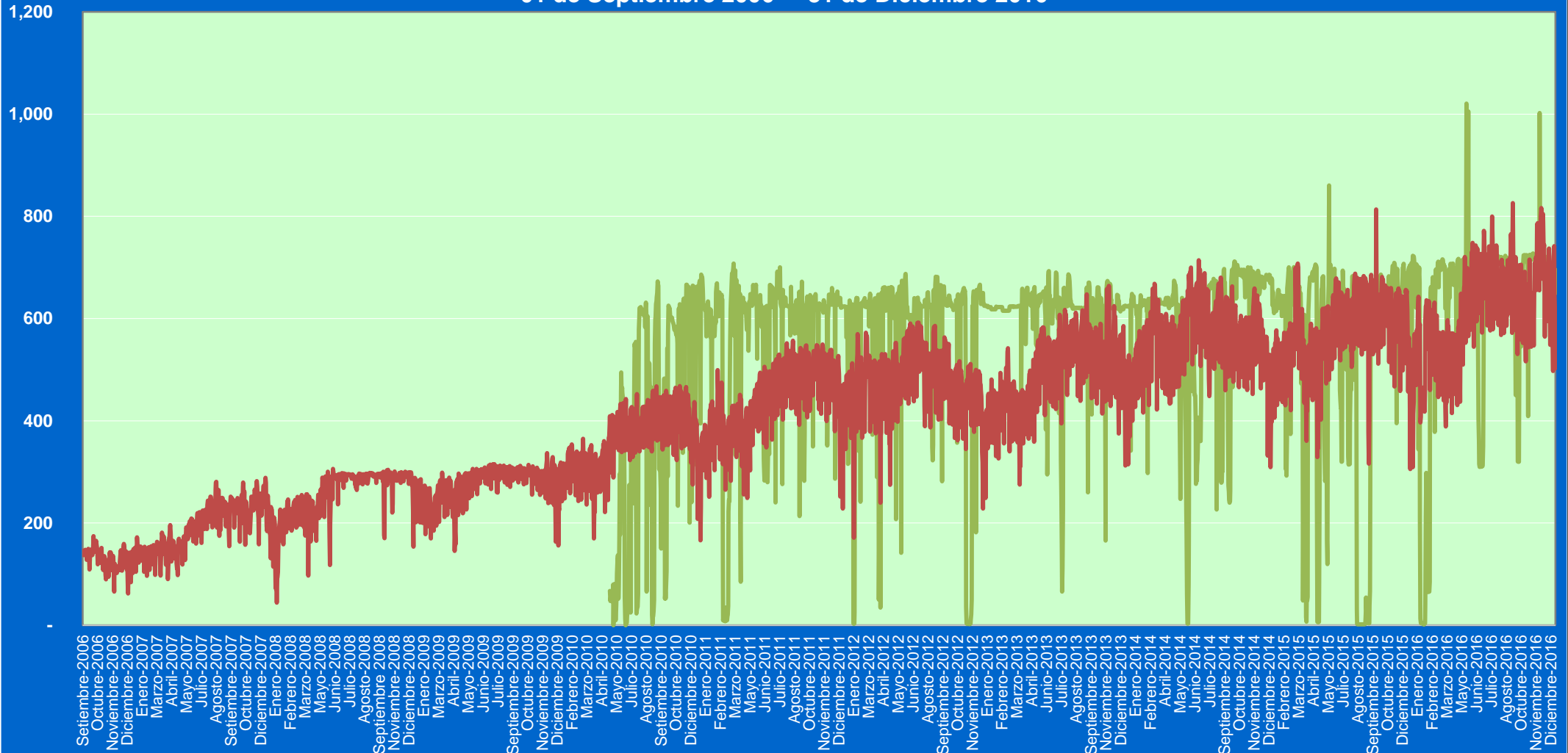
## REPORTE OPERATIVO\* DEL SISTEMA DE TRANSPORTE DE LÍQUIDOS DE GAS NATURAL (LGN) DURANTE DICIEMBRE 2016



\* Los valores podría diferir del Volumen Fiscalizado.

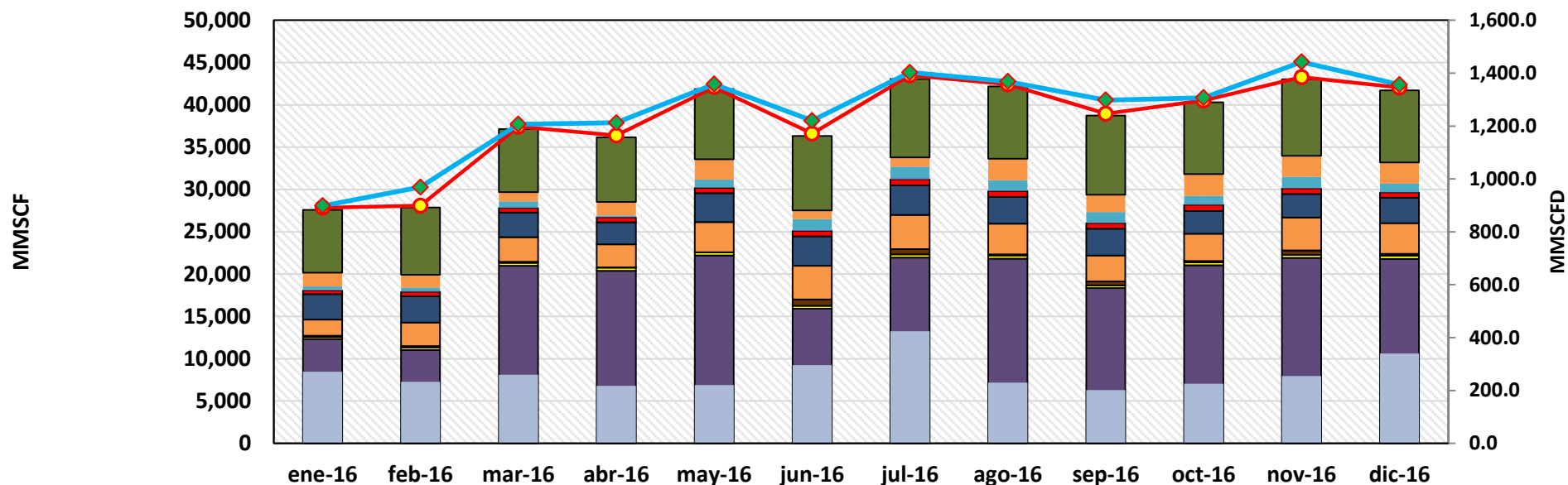
Volumen  
(MMSCFD)

### Volumen de Gas Natural entregado diariamente por TGP en millones de pies cúbicos diarios (MMSCFD) 01 de Septiembre 2006 - 31 de Diciembre 2016



— Planta Melchorita — B.O.O.T

## REPORTE MENSUAL DE VOLUMENES ENTREGADOS EN EL SISTEMA DE TRANSPORTE DE GAS NATURAL (GN) DURANTE EL 2016



	ene-16	feb-16	mar-16	abr-16	may-16	jun-16	jul-16	ago-16	sep-16	oct-16	nov-16	dic-16
Lurín	7,393.1	7,924.4	7,458.8	7,627.7	8,293.1	8,774.7	9,284.4	8,566.6	9,353.8	8,462.7	9,022.1	8,515.8
Chilca - Fenix Power	1,633.7	1,531.6	1,093.0	1,586.9	2,404.8	1,053.4	1,093.8	2,531.2	2,059.1	2,567.2	2,497.8	2,509.9
Chilca - Termochilca	364.5	397.7	722.1	161.1	908.2	1,281.4	1,341.2	1,169.8	1,219.2	980.7	1,283.3	973.2
Contugas - Chincha	97.4	77.6	84.5	83.4	91.1	99.3	148.9	96.3	96.4	101.8	78.8	69.1
Egesur-Egasa	446.6	551.6	503.7	566.8	613.0	636.7	689.2	712.7	640.5	707.5	673.7	610.5
Kallpa	3,024.9	3,084.5	2,926.7	2,611.6	3,426.1	3,494.6	3,524.2	3,139.2	3,165.3	2,702.5	2,768.3	2,995.9
Engie Energia Perú	1,901.2	2,791.6	2,897.9	2,710.9	3,552.5	3,965.6	4,027.9	3,630.9	3,083.2	3,208.1	3,899.9	3,658.1
Duke Energy	130.2	169.2	134.1	55.7	0.0	749.3	617.2	122.7	447.7	181.3	518.2	191.3
Humay	252.2	313.9	353.0	360.9	378.3	351.3	384.8	379.7	335.6	348.0	365.5	375.4
Planta Melchorita	12,330.5	11,014.1	20,978.2	20,391.6	22,205.7	15,903.9	21,954.7	21,837.8	18,343.2	21,032.8	21,907.0	21,809.8
Contugas - Chincha	271.0	232.2	260.1	217.3	220.1	296.2	423.6	230.1	201.1	226.0	254.6	340.1
Total Transportado GN	27,845.4	28,088.5	37,412.1	36,373.9	42,092.8	36,606.5	43,489.9	42,416.9	38,945.1	40,518.7	43,269.2	42,049.1
Promedio Total Transportado (MMSCFD)	898.24	968.57	1,206.84	1,212.46	1,357.83	1,220.22	1,402.90	1,368.29	1,298.17	1,307.05	1,442.31	1,356.42

# REPORTE MENSUAL DE VOLUMENES ENTREGADOS EN EL SISTEMA DE TRANSPORTE DE LIQUIDOS DE GAS NATURAL (LGN) DURANTE EL 2016

