

REPORTE DIARIO DE LA OPERACIÓN DE LOS SISTEMAS DE TRANSPORTE DE GAS NATURAL (GN) Y LÍQUIDOS DE GAS NATURAL (LGN)

CONCESIONARIO: TRANSPORTADORA DE GAS DEL PERU S.A.

PERIODO: DICIEMBRE 2018

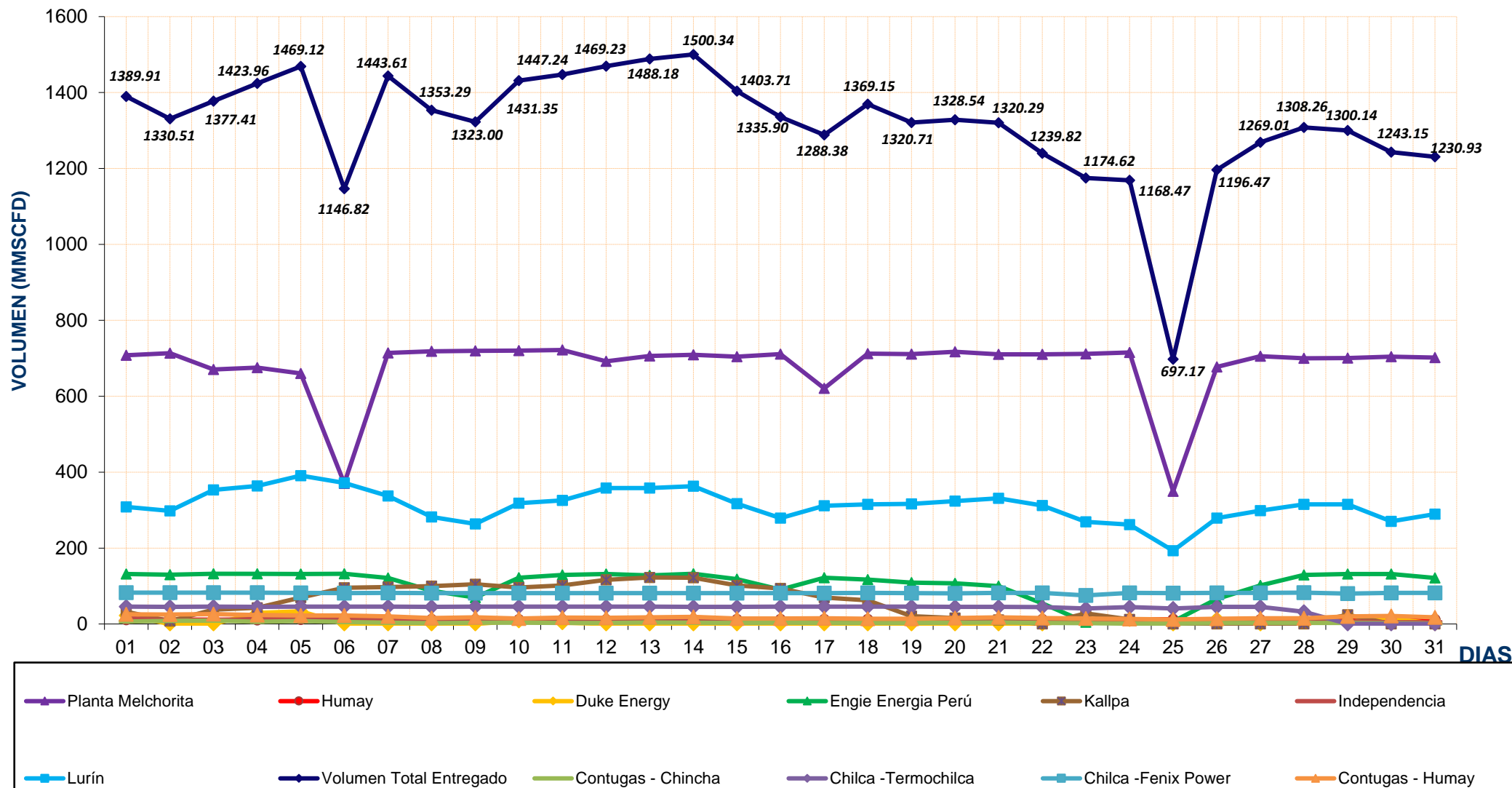
Entregas del Sistema de Transporte de Gas Natural (MMSCFD <sup>1</sup> )															Sistema de Transporte de Líquidos de Gas Natural (BPD <sup>2</sup> )	
Días	Ducto Principal PLNG			Ducto TGP										Total Volumen Entregado	Días	Volumen Bombeado Malvinas
	Chiquintirca	C.U.A	Planta Melchorita	Humay	Duke Energy	Engle Energía Perú	Kallpa	Independencia	Chincha - Contugas	Humay - Contugas	Chilca - Termochilca	Chilca - Fenix Power	Lurín			
1-Dic-18	1072.57	345.94	708.15	11.52	22.25	131.88	32.30	15.82	6.32	25.47	45.65	82.25	308.29	1389.91	1-Dic-18	87,911.50
2-Dic-18	999.89	294.50	713.49	11.40	0.00	129.97	7.56	9.42	8.41	24.78	45.28	82.30	297.91	1330.51	2-Dic-18	84,119.50
3-Dic-18	1028.74	356.94	670.35	11.33	0.00	131.97	37.89	10.13	9.00	25.97	45.52	82.31	352.94	1377.41	3-Dic-18	90,599.00
4-Dic-18	1039.77	384.43	675.12	11.02	29.13	132.06	42.80	13.31	5.84	23.48	45.39	82.41	363.39	1423.96	4-Dic-18	91,349.00
5-Dic-18	1149.65	451.79	660.15	11.89	33.39	131.76	69.77	13.66	7.75	22.30	45.58	82.04	390.83	1469.12	5-Dic-18	90,793.50
6-Dic-18	0.00	503.48	370.24	11.94	0.00	132.01	95.12	11.13	5.11	22.45	45.61	81.51	371.70	1146.82	6-Dic-18	89,947.00
7-Dic-18	1086.14	367.94	713.86	11.61	0.00	120.99	97.07	12.86	3.08	19.88	45.58	81.68	337.00	1443.61	7-Dic-18	89,121.00
8-Dic-18	1005.65	314.59	718.27	11.94	0.00	87.39	99.57	9.38	2.21	15.45	45.39	81.45	282.22	1353.29	8-Dic-18	90,264.50
9-Dic-18	971.51	266.82	719.31	11.51	0.00	69.45	104.80	6.11	3.65	17.58	45.45	81.50	263.64	1323.00	9-Dic-18	89,221.00
10-Dic-18	1099.48	356.07	720.25	11.49	8.35	121.78	96.21	9.87	3.44	14.59	45.68	81.53	318.16	1431.35	10-Dic-18	90,076.00
11-Dic-18	1083.98	371.52	721.75	11.46	3.59	129.30	101.41	7.67	2.64	16.61	45.70	81.52	325.58	1447.24	11-Dic-18	89,306.50
12-Dic-18	1101.97	408.10	692.07	11.29	0.00	131.89	116.51	13.18	2.61	16.47	45.65	81.49	358.07	1469.23	12-Dic-18	87,288.50
13-Dic-18	1113.40	418.22	705.81	11.48	0.00	128.21	122.51	13.82	3.93	17.28	45.45	81.57	358.11	1488.18	13-Dic-18	91,397.00
14-Dic-18	1126.69	423.92	709.12	11.86	0.00	131.94	121.79	13.81	3.16	18.75	45.27	81.57	363.07	1500.34	14-Dic-18	94,376.50
15-Dic-18	1068.40	370.94	703.94	11.70	0.00	118.18	101.79	7.36	2.65	14.31	45.26	81.58	316.92	1403.71	15-Dic-18	93,551.00
16-Dic-18	1066.20	316.23	710.89	12.24	0.00	90.60	93.42	5.15	3.31	14.36	45.50	81.53	278.91	1335.90	16-Dic-18	92,043.50
17-Dic-18	963.50	350.38	620.52	12.00	0.00	122.08	69.44	8.07	2.88	14.79	45.49	81.57	311.54	1288.38	17-Dic-18	80,256.50
18-Dic-18	1012.28	317.38	711.98	11.99	0.00	116.86	62.06	7.37	2.69	13.74	45.50	81.65	315.32	1369.15	18-Dic-18	95,195.50
19-Dic-18	1010.11	294.37	711.18	11.91	0.00	108.87	20.42	8.20	2.91	13.88	45.41	81.47	316.46	1320.71	19-Dic-18	91,827.00
20-Dic-18	978.03	278.67	717.16	11.85	0.00	107.15	15.56	7.84	3.63	15.81	45.28	80.76	323.50	1328.54	20-Dic-18	94,456.00
21-Dic-18	947.42	278.58	710.38	11.86	0.00	99.48	10.84	7.54	4.18	17.73	45.20	82.12	330.96	1320.29	21-Dic-18	91,446.50
22-Dic-18	919.07	227.03	710.29	11.68	0.00	54.35	0.00	6.65	2.76	15.44	44.61	81.82	312.23	1239.82	22-Dic-18	90,341.00
23-Dic-18	854.08	171.57	711.56	11.92	12.91	4.42	28.16	3.15	2.18	14.60	41.04	75.28	269.39	1174.62	23-Dic-18	95,723.50
24-Dic-18	864.75	165.99	715.03	12.40	11.78	10.69	11.84	4.59	1.18	12.96	44.23	81.99	261.79	1168.47	24-Dic-18	92,570.00
25-Dic-18	650.26	167.58	349.47	12.38	0.00	6.31	0.00	1.29	0.99	11.91	40.55	81.32	192.94	697.17	25-Dic-18	72,804.00
26-Dic-18	810.33	200.28	677.07	12.04	12.61	65.91	0.00	6.59	2.56	13.70	44.90	82.07	279.03	1196.47	26-Dic-18	92,545.50
27-Dic-18	907.46	235.41	705.12	11.61	0.00	101.82	0.00	6.66	2.65	15.02	45.24	82.16	298.73	1269.01	27-Dic-18	88,421.50
28-Dic-18	942.41	270.70	699.78	12.63	11.98	129.24	0.00	7.20	2.70	14.97	32.49	82.31	314.96	1308.26	28-Dic-18	95,357.50
29-Dic-18	934.90	272.27	700.72	12.18	5.71	131.72	24.46	6.92	2.63	19.99	0.49	80.31	315.00	1300.14	29-Dic-18	85,961.50
30-Dic-18	946.16	233.38	704.22	12.41	14.63	131.47	0.00	4.64	2.32	21.01	0.41	81.85	270.19	1243.15	30-Dic-18	92,828.00
31-Dic-18	947.39	238.49	701.71	11.93	0.74	121.43	0.00	4.70	1.15	17.58	0.16	82.02	289.52	1230.93	31-Dic-18	87,509.50
<b>TOTAL</b>	<b>29,702.19</b>	<b>9,653.49</b>	<b>21,058.95</b>	<b>366.47</b>	<b>167.07</b>	<b>3,231.21</b>	<b>1,583.32</b>	<b>264.09</b>	<b>110.52</b>	<b>542.85</b>	<b>1,248.95</b>	<b>2,526.94</b>	<b>9,688.30</b>	<b>40,788.68</b>	<b>TOTAL</b>	<b>2,788,608.50</b>
<b>PROMEDIO</b>	<b>958.14</b>	<b>311.40</b>	<b>679.32</b>	<b>11.82</b>	<b>5.39</b>	<b>104.23</b>	<b>51.07</b>	<b>8.52</b>	<b>3.57</b>	<b>17.51</b>	<b>40.29</b>	<b>81.51</b>	<b>312.53</b>	<b>1,315.76</b>	<b>PROMEDIO</b>	<b>89,955.11</b>

(\*) Los datos de volúmenes de Gas Natural y Líquidos de Gas Natural son operativos y no necesariamente coinciden con datos fiscalizados.

<sup>1</sup> MMSCFD: Millones de Pies Cúbicos Estándar por Día

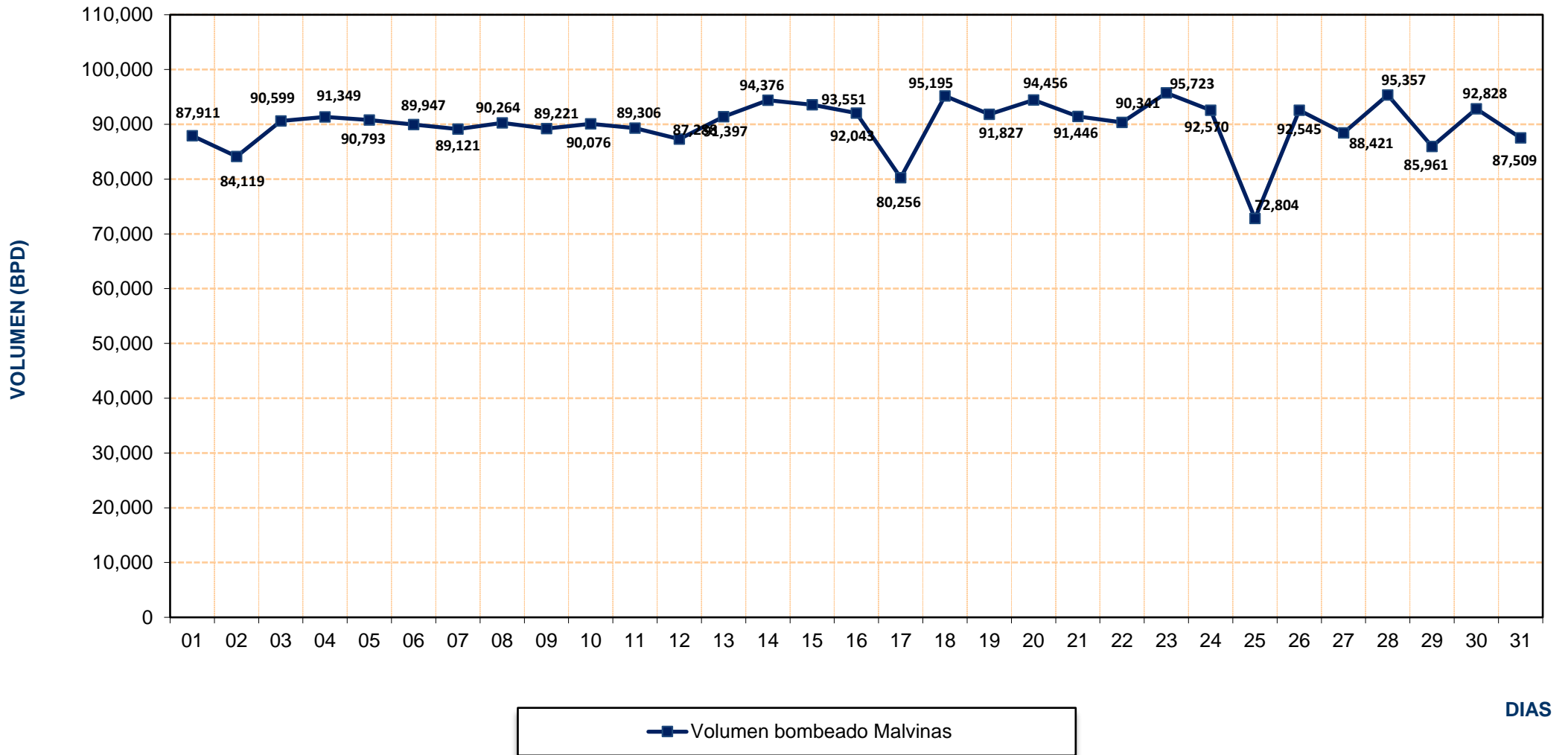
<sup>2</sup> BPD: Barriles Por Día

## REPORTE OPERATIVO\* DEL SISTEMA DE TRANSPORTE DE GAS NATURAL (GN) DURANTE DICIEMBRE 2018



\* Los valores podría diferir del Volumen Fiscalizado.

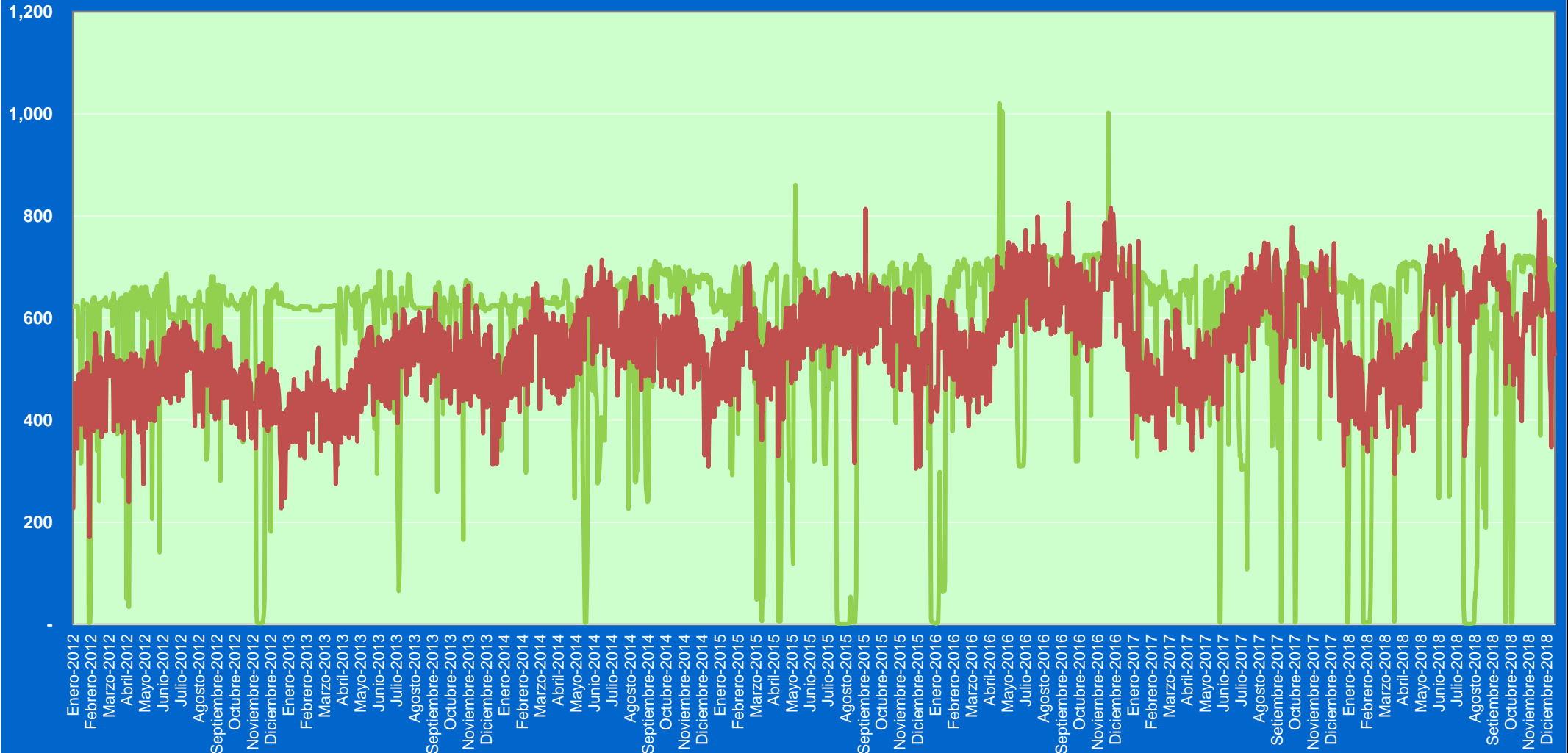
## REPORTE OPERATIVO\* DEL SISTEMA DE TRANSPORTE DE LÍQUIDOS DE GAS NATURAL (LGN) DURANTE DICIEMBRE 2018



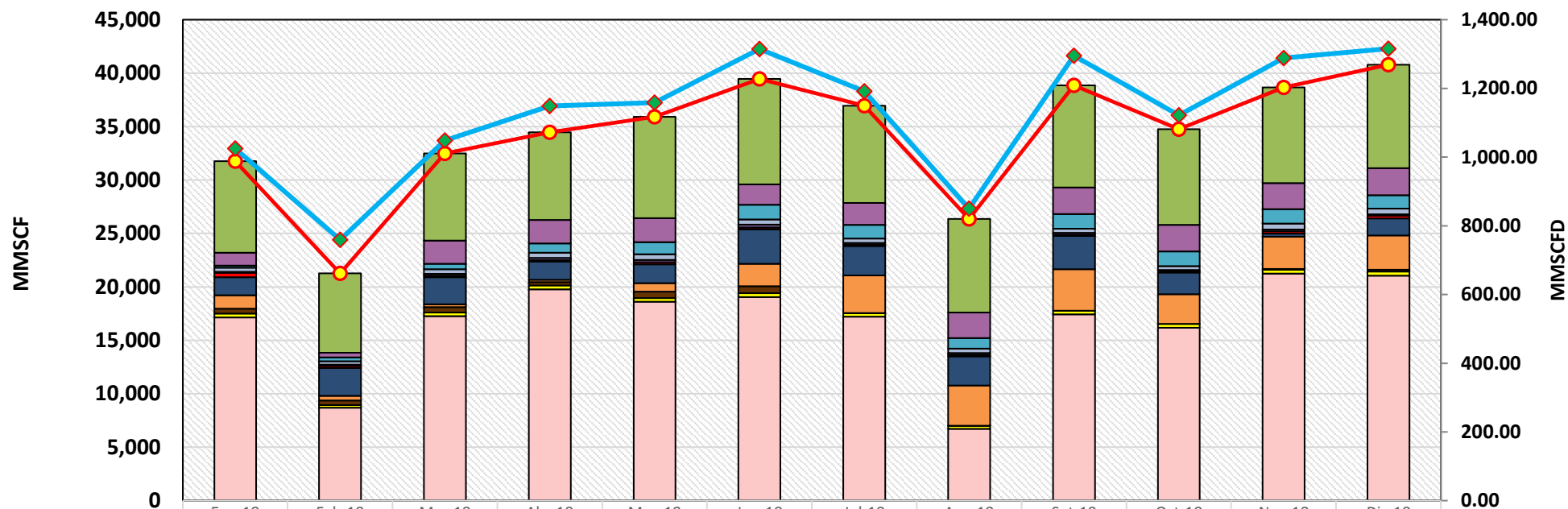
\* Los valores podría diferir del Volumen Fiscalizado.

Volumen  
(MMSCFD)

### Volumen de Gas Natural entregado diariamente por TGP en millones de pies cúbicos diarios (MMSCFD) Enero 2012 - 31 de diciembre del 2018

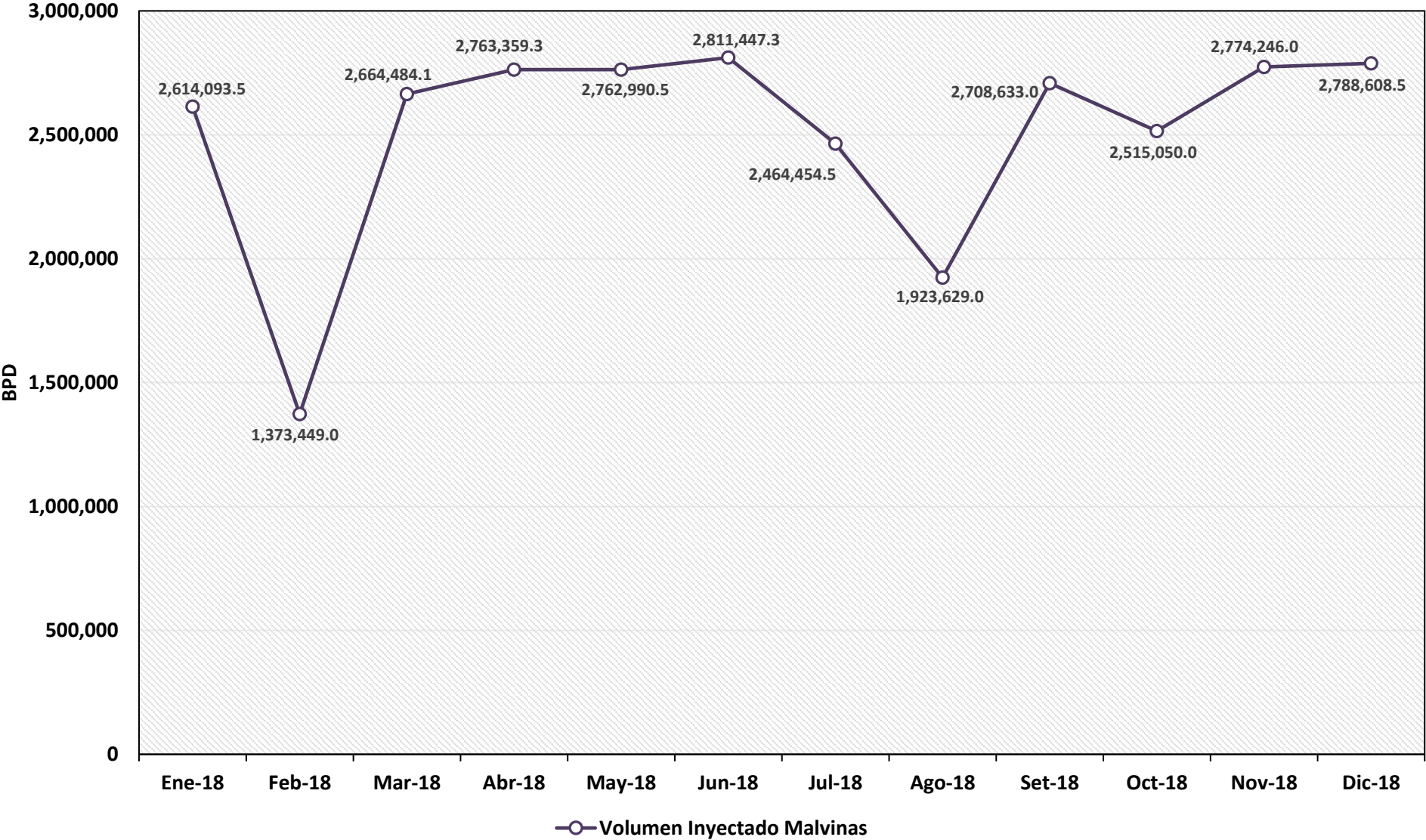


## REPORTE MENSUAL DE VOLUMENES ENTREGADOS EN EL SISTEMA DE TRANSPORTE DE GAS NATURAL (GN) DURANTE EL 2018



	Ene-18	Feb-18	Mar-18	Abr-18	May-18	Jun-18	Jul-18	Ago-18	Set-18	Oct-18	Nov-18	Dic-18
Lurín	8,566.5	7,418.2	8,163.7	8,198.8	9,485.3	9,864.4	9,079.3	8,739.3	9,544.5	8,969.5	8,960.7	9,688.3
Chilca - Fenix Power	1,203.0	436.8	2,159.3	2,200.5	2,245.1	1,890.5	2,060.3	2,404.6	2,485.5	2,486.9	2,434.1	2,526.9
Chilca - Termochilca	204.3	356.5	514.8	861.1	1,151.9	1,374.5	1,268.6	988.2	1,368.2	1,374.0	1,347.5	1,248.9
Contugas - Humay	395.4	331.7	422.5	492.3	516.9	500.7	424.9	403.4	390.9	349.9	563.1	542.9
Contugas - Chinchá	82.1	114.0	186.3	217.2	223.2	247.3	164.3	175.2	171.4	113.6	167.1	110.5
Egesur-Egasa	413.0	188.3	140.5	120.9	196.3	167.4	128.7	137.7	132.4	125.9	214.7	264.1
Kallpa	1,687.3	2,612.8	2,535.6	1,709.0	1,742.4	3,237.6	2,740.6	2,737.5	3,095.4	2,040.6	283.9	1,583.3
Engie Energía Perú	1,266.4	432.3	251.2	214.6	809.2	2,112.1	3,531.6	3,745.1	3,883.8	2,758.7	3,014.3	3,231.2
Duke Energy	459.7	433.2	506.6	323.2	592.6	646.7	16.9	15.2	0.0	16.5	69.2	167.1
Humay	348.6	241.9	352.3	361.6	358.2	356.4	321.0	278.0	351.6	341.4	356.4	366.5
Planta Melchorita	17,145.2	8,692.1	17,256.6	19,765.4	18,601.7	19,048.5	17,202.9	6,726.0	17,426.6	16,187.1	21,250.9	21,058.9
Total Transportado GN	31,771.5	21,257.9	32,494.4	34,464.7	35,922.6	39,446.0	36,939.3	26,350.1	38,850.2	34,764.1	38,662.0	40,788.7
Promedio Total Transportado (MMSCFD)	1,024.89	759.21	1,048.05	1,148.82	1,158.79	1,314.87	1,191.59	850.00	1,295.01	1,121.42	1,288.73	1,315.76

# REPORTE MENSUAL DE VOLUMENES ENTREGADOS EN EL SISTEMA DE TRANSPORTE DE LIQUIDOS DE GAS NATURAL (LGN) DURANTE EL 2018



**VOLUMEN PROMEDIO DIARIO DE LÍQUIDOS DE GAS NATURAL TRANSPORTADO POR TGP EN  
BARRILES POR DÍA (BPD)  
Junio 2012 - Diciembre 2018**

