

REPORTE DIARIO DE LA OPERACIÓN\* DE LOS SISTEMAS DE TRANSPORTE DE GAS NATURAL (GN) Y LÍQUIDOS DE GAS NATURAL (LGN)

CONCESIONARIO: TRANSPORTADORA DE GAS DEL PERU S.A.

PERIODO: Enero 2014

Entregas del Sistema de Transporte de Gas Natural (MMSCFD <sup>1</sup> )															Sistema de Transporte de Líquidos de Gas Natural (BPD <sup>2</sup> )	
Días	Ducto Principal PLNG			Ducto TGP										Total Volumen Entregado	Días	Volumen Bombeado Malvinas
	Chiquintirca	C.U.A	Planta Melchorita	Humay	Duke Energy	Enersur	Kallpa	Egasa / Egesur	Chincha - Contugas	Humay - Contugas	Chilca - Termochilca	Chilca - Fenix Power	Lurin			
01-ene-14	748.07	20.96	624.39	15.35	0.00	90.37	47.65	19.49	0.05	0.00	0.00	0.00	141.95	939.24	01-ene-14	95,998.00
02-ene-14	731.84	153.30	624.52	16.94	0.00	114.65	73.88	22.29	0.07	0.00	0.00	0.00	259.53	1111.87	02-ene-14	88,056.00
03-ene-14	804.64	225.74	622.53	17.16	0.00	117.73	96.40	23.11	0.07	0.00	0.00	0.00	273.87	1150.87	03-ene-14	97,085.00
04-ene-14	814.09	192.51	625.31	17.77	0.00	114.28	90.63	12.65	0.07	0.00	0.00	0.00	234.38	1095.09	04-ene-14	97,353.50
05-ene-14	787.14	81.85	624.31	18.37	0.00	101.85	60.16	14.52	0.06	0.00	0.00	7.92	165.73	992.93	05-ene-14	96,812.00
06-ene-14	737.74	107.03	624.82	17.48	0.00	104.50	94.81	17.25	0.07	0.00	0.00	5.24	221.59	1085.74	06-ene-14	96,747.00
07-ene-14	743.91	157.02	624.57	13.31	0.00	105.48	101.13	16.65	0.07	0.00	0.00	1.85	240.40	1103.45	07-ene-14	95,463.00
08-ene-14	548.33	154.00	341.49	16.37	0.00	103.02	95.80	19.41	0.07	0.00	0.00	0.00	246.19	822.34	08-ene-14	88,285.00
09-ene-14	753.77	153.36	637.59	15.47	0.00	96.07	100.63	17.99	0.07	0.00	0.00	7.92	246.44	1122.18	09-ene-14	97,900.00
10-ene-14	756.53	151.07	639.16	16.62	0.00	69.64	107.48	17.94	0.07	0.00	0.00	13.51	260.11	1124.53	10-ene-14	95,707.00
11-ene-14	777.14	149.74	648.41	17.30	0.00	85.38	97.92	15.86	0.07	0.00	0.00	6.34	231.40	1102.67	11-ene-14	95,440.00
12-ene-14	760.40	112.50	640.46	17.44	0.00	86.15	84.77	12.13	0.06	0.00	0.00	0.00	199.30	1040.32	12-ene-14	92,861.00
13-ene-14	795.06	185.55	634.96	17.11	0.00	105.58	99.04	19.46	0.07	0.00	0.00	0.00	247.20	1123.42	13-ene-14	96,550.00
14-ene-14	833.95	226.81	642.71	15.72	0.00	108.07	104.47	21.46	0.07	0.00	0.00	0.00	262.09	1154.59	14-ene-14	81,047.00
15-ene-14	859.31	226.04	643.93	15.16	0.00	108.29	102.71	21.36	0.07	0.00	0.00	0.00	264.99	1156.52	15-ene-14	94,830.00
16-ene-14	892.75	235.37	625.23	15.79	0.00	105.92	106.07	21.00	0.07	0.00	0.00	9.68	262.75	1146.50	16-ene-14	102,729.00
17-ene-14	838.36	199.62	624.70	17.17	0.00	109.86	104.28	20.68	0.07	0.00	0.00	8.82	252.85	1138.43	17-ene-14	84,345.00
18-ene-14	769.46	222.55	624.36	15.55	0.00	109.06	105.79	20.82	0.07	0.00	0.00	7.05	259.03	1141.72	18-ene-14	68,843.00
19-ene-14	799.69	166.27	624.28	16.10	0.00	99.72	81.75	16.34	0.06	0.00	0.00	4.15	209.05	1051.47	19-ene-14	68,055.00
20-ene-14	806.96	237.99	624.51	14.71	0.00	116.21	110.69	21.78	0.08	0.00	0.00	1.78	266.86	1156.61	20-ene-14	71,250.00
21-ene-14	875.14	254.63	624.28	16.17	0.00	114.64	110.36	21.68	0.08	0.00	0.00	0.00	279.73	1166.93	21-ene-14	76,513.00
22-ene-14	824.93	247.26	607.55	16.43	0.00	108.22	107.47	21.24	0.08	0.00	15.92	1.78	263.91	1142.60	22-ene-14	73,990.00
23-ene-14	869.52	256.33	620.82	16.34	0.00	107.13	102.68	20.73	0.07	0.00	18.80	25.06	258.46	1170.08	23-ene-14	75,669.00
24-ene-14	859.20	260.44	620.87	15.51	0.00	103.11	99.61	16.93	0.07	0.00	13.24	37.16	266.63	1173.13	24-ene-14	76,584.00
25-ene-14	861.54	275.96	541.71	16.15	0.00	108.85	89.37	19.37	0.07	0.00	12.61	27.71	253.11	1068.95	25-ene-14	74,153.00
26-ene-14	881.47	201.82	588.35	17.04	0.00	97.91	60.23	12.60	0.06	0.00	12.88	29.27	213.90	1032.24	26-ene-14	92,531.00
27-ene-14	845.42	255.13	624.35	16.93	0.00	116.37	105.64	21.72	0.08	0.00	24.76	0.90	257.30	1168.04	27-ene-14	99,848.00
28-ene-14	851.51	259.19	624.61	17.04	0.00	110.52	106.61	21.30	0.08	0.00	22.32	26.97	253.37	1182.80	28-ene-14	99,603.00
29-ene-14	882.80	264.88	624.22	17.17	0.00	107.55	106.15	20.62	0.09	0.00	14.23	31.42	260.10	1181.54	29-ene-14	100,728.00
30-ene-14	901.65	312.58	532.34	17.49	0.00	111.91	106.58	18.40	0.08	0.00	21.12	35.45	264.80	1108.17	30-ene-14	80,518.00
31-ene-14	896.20	280.42	581.13	17.57	0.00	113.11	102.68	20.28	0.08	0.00	13.26	38.57	262.53	1149.21	31-ene-14	101,927.00
<b>TOTAL</b>	<b>25,108.52</b>	<b>6,227.93</b>	<b>18,912.45</b>	<b>510.72</b>	<b>0.00</b>	<b>3,251.16</b>	<b>2,963.40</b>	<b>587.06</b>	<b>2.19</b>	<b>0.00</b>	<b>169.12</b>	<b>328.54</b>	<b>7,579.56</b>	<b>34,304.19</b>	<b>TOTAL</b>	<b>2,757,420.50</b>
<b>PROMEDIO</b>	<b>809.95</b>	<b>200.90</b>	<b>610.08</b>	<b>16.47</b>	<b>0.00</b>	<b>104.88</b>	<b>95.59</b>	<b>18.94</b>	<b>0.07</b>	<b>0.00</b>	<b>5.46</b>	<b>10.60</b>	<b>244.50</b>	<b>1,106.59</b>	<b>PROMEDIO</b>	<b>88,949.05</b>

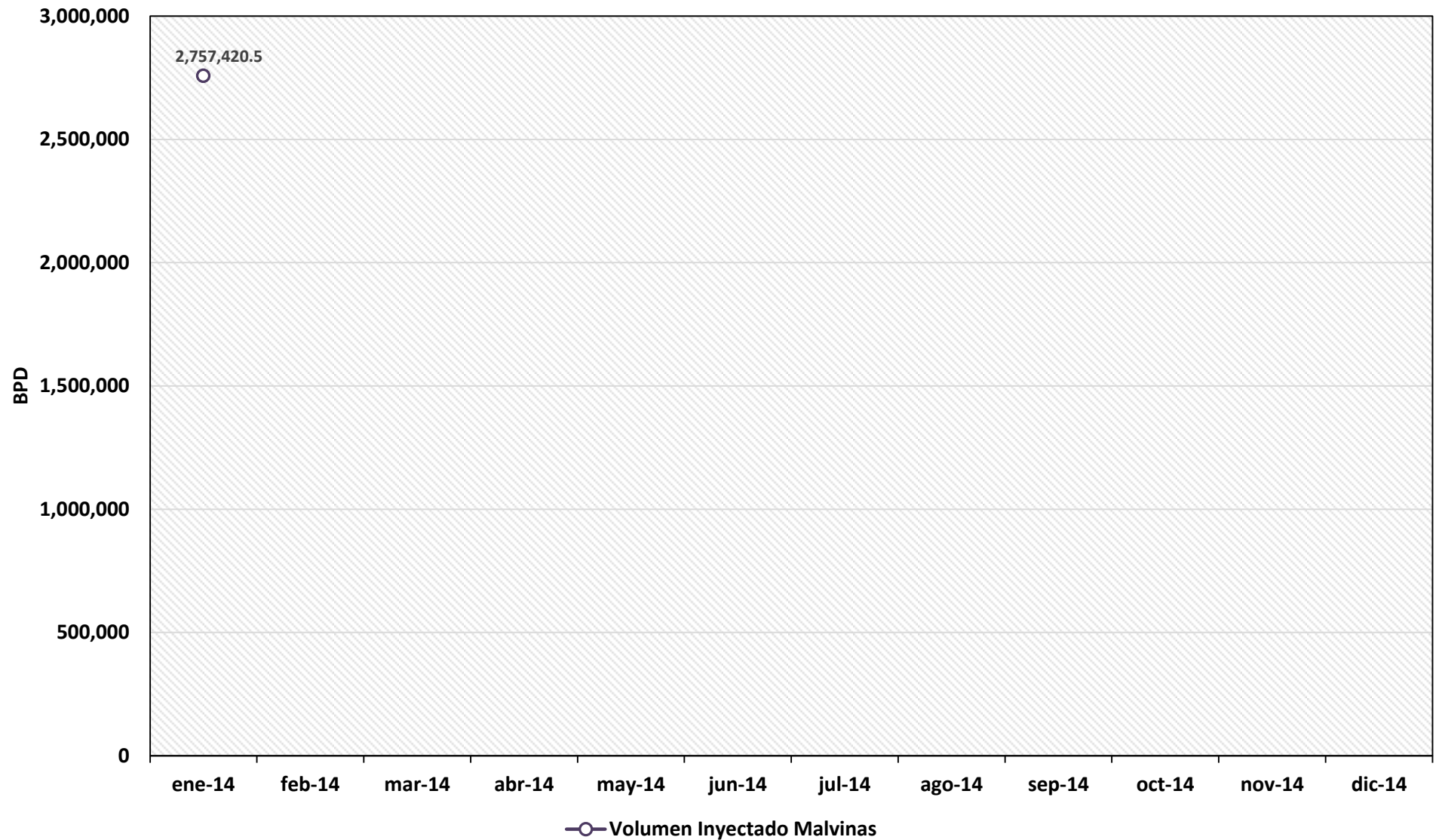
(\*) Los datos de volúmenes de Gas Natural y Líquidos de Gas Natural son operativos y no necesariamente coinciden con datos fiscalizados.

<sup>1</sup> MMSCFD: Millones de Pies Cúbicos Estandar por Día

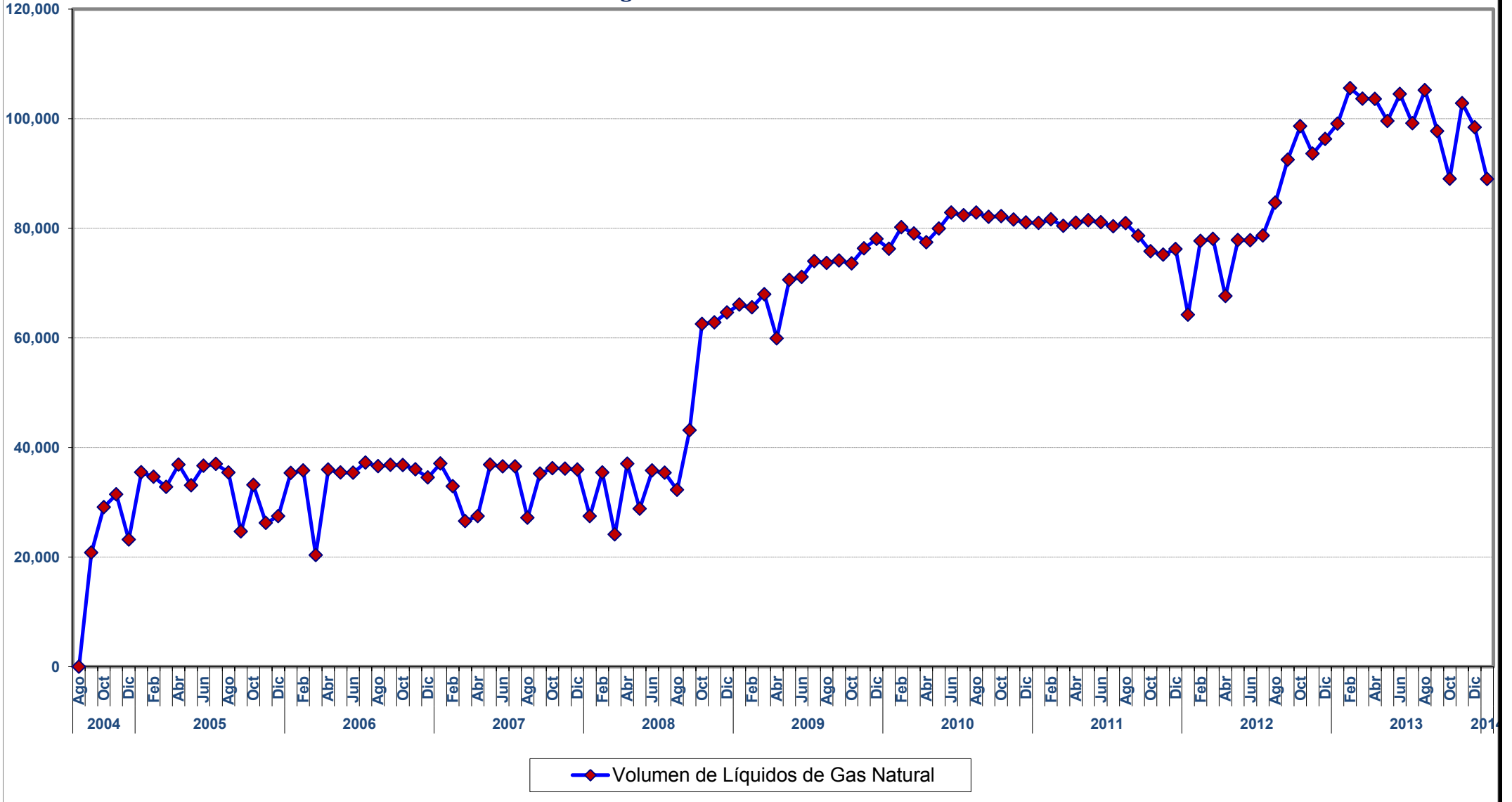
<sup>2</sup> BPD: Barriles Por Día



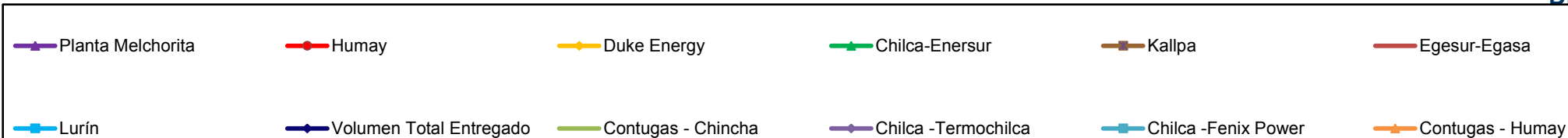
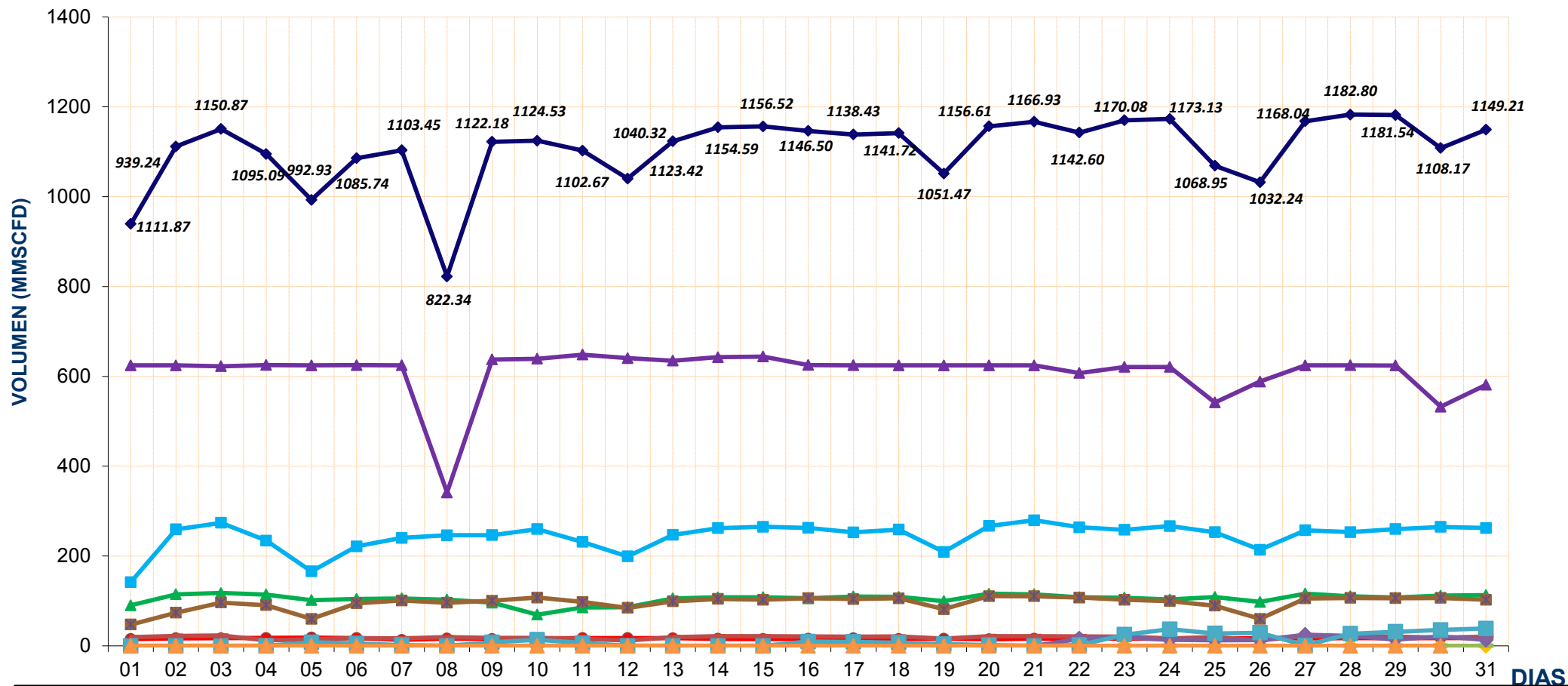
## REPORTE MENSUAL DE VOLUMENES ENTREGADOS EN EL SISTEMA DE TRANSPORTE DE LIQUIDOS DE GAS NATURAL (LGN) DURANTE EL 2014



## VOLUMEN PROMEDIO DIARIO DE LÍQUIDOS DE GAS NATURAL TRANSPORTADO POR TGP EN BARRILES POR DÍA (BPD) Agosto 2004 - Enero 2014

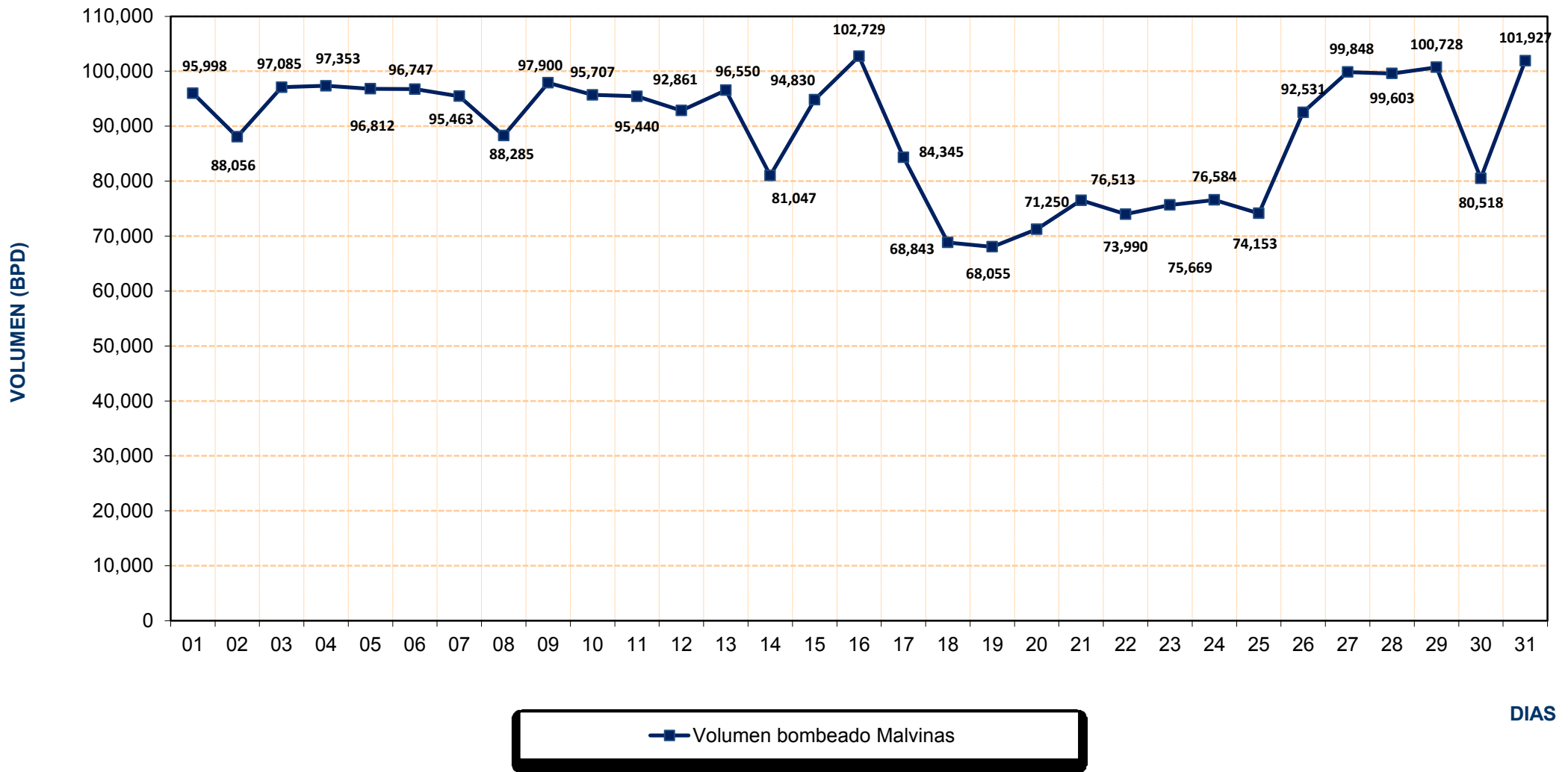


## REPORTE OPERATIVO\* DEL SISTEMA DE TRANSPORTE DE GAS NATURAL (GN) DURANTE ENERO 2014



\* Los valores podría diferir del Volumen Fiscalizado.

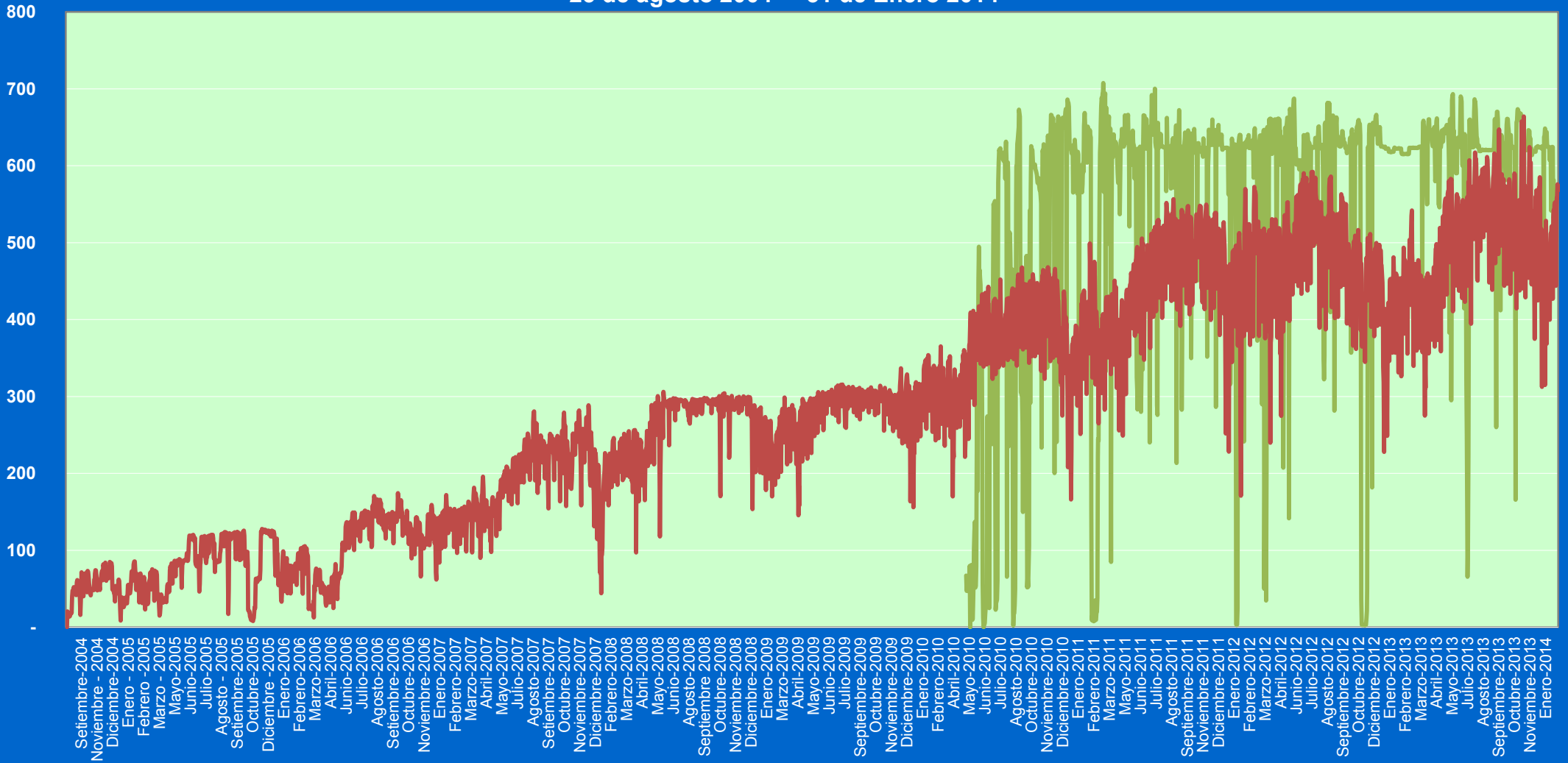
## REPORTE OPERATIVO\* DEL SISTEMA DE TRANSPORTE DE LÍQUIDOS DE GAS NATURAL (LGN) DURANTE ENERO 2014



\* Los valores podría diferir del Volumen Fiscalizado.

Volumen  
(MMSCFD)

### Volumen de Gas Natural entregado diariamente por TGP en millones de pies cúbicos diarios (MMSCFD) 25 de agosto 2004 - 31 de Enero 2014



— Planta Melchorita — B.O.O.T