

**REPORTE DIARIO DE LA OPERACIÓN\* DE LOS SISTEMAS DE TRANSPORTE DE GAS NATURAL (GN) Y LÍQUIDOS DE GAS NATURAL (LGN)**

CONCESIONARIO: TRANSPORTADORA DE GAS DEL PERU S.A.

PERIODO: Octubre 2013

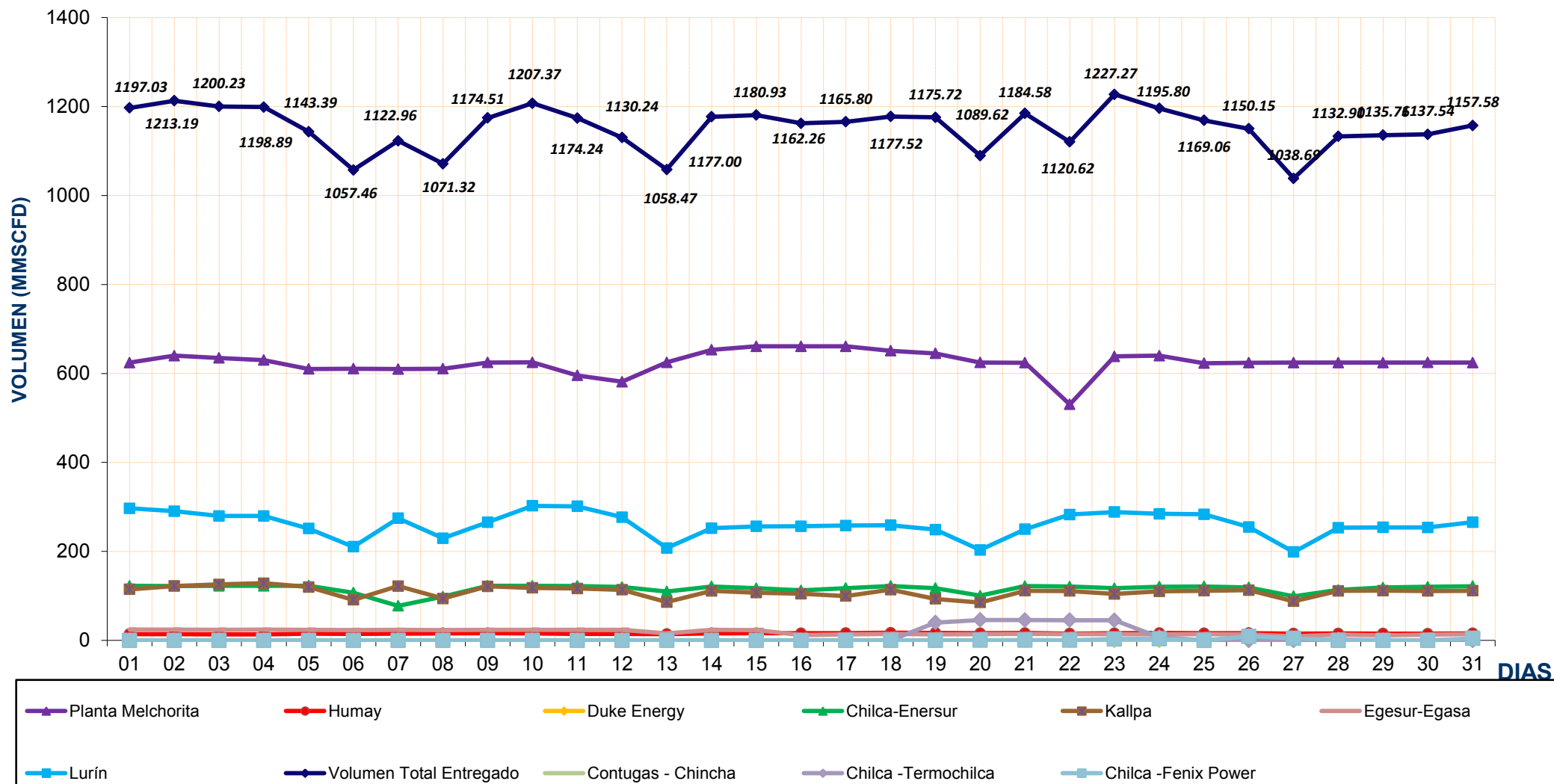
| Entregas del Sistema de Transporte de Gas Natural (MMSCFD <sup>1</sup> ) |                      |                 |                   |               |             |                  |                 |               |                    |                      |                      |                 |                         | Sistema de Transporte de Líquidos de Gas Natural (BPD <sup>2</sup> ) |                           |
|--|----------------------|-----------------|-------------------|---------------|-------------|------------------|-----------------|---------------|--------------------|----------------------|----------------------|-----------------|-------------------------|--|---------------------------|
| Días   | Ducto Principal PLNG |                 |                   | Ducto TGP     |             |                  |                 |               |                    |                      |                      |                 | Total Volumen Entregado | Días   | Volumen Bombeado Malvinas |
|  | Chiquintirca         | C.U.A           | Planta Melchorita | Humay         | Duke Energy | Enersur (Chilca) | Kallpa          | Egesur-Egasa  | Contugas - Chincha | Chilca - Termochilca | Chilca - Fenix Power | Lurín           |                         |  |                           |
| 01-oct-13  | 844.20               | 243.29          | 624.44            | 14.30         | 0.00        | 122.59           | 114.72          | 24.06         | 0.00               | 0.00                 | 0.00                 | 296.92          | 1197.03                 | 01-oct-13  | 75,346.00                 |
| 02-oct-13  | 867.72               | 263.76          | 640.04            | 14.13         | 0.00        | 122.28           | 122.17          | 24.10         | 0.00               | 0.00                 | 0.00                 | 290.47          | 1213.19                 | 02-oct-13  | 75,642.00                 |
| 03-oct-13  | 877.38               | 268.42          | 635.02            | 13.24         | 0.00        | 122.59           | 125.81          | 23.97         | 0.00               | 0.00                 | 0.00                 | 279.61          | 1200.23                 | 03-oct-13  | 76,634.50                 |
| 04-oct-13  | 872.82               | 275.91          | 630.03            | 13.74         | 0.00        | 122.66           | 128.53          | 24.22         | 0.00               | 0.00                 | 0.00                 | 279.71          | 1198.89                 | 04-oct-13  | 76,709.00                 |
| 05-oct-13  | 877.67               | 243.46          | 610.29            | 15.14         | 0.00        | 122.91           | 119.77          | 23.90         | 0.00               | 0.00                 | 0.00                 | 251.39          | 1143.39                 | 05-oct-13  | 74,014.00                 |
| 06-oct-13  | 863.88               | 160.20          | 610.71            | 14.55         | 0.00        | 107.26           | 91.11           | 23.34         | 0.00               | 0.00                 | 0.00                 | 210.49          | 1057.46                 | 06-oct-13  | 75,348.00                 |
| 07-oct-13  | 813.98               | 203.49          | 610.00            | 15.23         | 0.00        | 77.57            | 121.96          | 23.70         | 0.00               | 0.00                 | 0.00                 | 274.50          | 1122.96                 | 07-oct-13  | 77,159.00                 |
| 08-oct-13  | 799.59               | 184.66          | 610.62            | 15.69         | 0.00        | 98.27            | 94.02           | 23.16         | 0.00               | 0.00                 | 0.00                 | 229.56          | 1071.32                 | 08-oct-13  | 72,832.00                 |
| 09-oct-13  | 825.86               | 268.72          | 624.69            | 16.09         | 0.00        | 122.92           | 121.51          | 23.67         | 0.00               | 0.00                 | 0.00                 | 265.61          | 1174.51                 | 09-oct-13  | 73,665.50                 |
| 10-oct-13  | 841.74               | 292.29          | 624.89            | 15.49         | 0.00        | 122.53           | 117.97          | 23.92         | 0.00               | 0.00                 | 0.00                 | 302.58          | 1207.37                 | 10-oct-13  | 75,177.00                 |
| 11-oct-13  | 855.22               | 289.53          | 595.71            | 14.51         | 0.00        | 122.41           | 116.55          | 23.74         | 0.00               | 0.00                 | 0.00                 | 301.32          | 1174.24                 | 11-oct-13  | 73,600.00                 |
| 12-oct-13  | 861.26               | 268.20          | 581.28            | 14.81         | 0.00        | 119.77           | 113.60          | 23.79         | 0.00               | 0.00                 | 0.00                 | 277.00          | 1130.24                 | 12-oct-13  | 74,872.00                 |
| 13-oct-13  | 897.43               | 167.78          | 624.97            | 14.18         | 0.00        | 110.02           | 85.98           | 15.67         | 0.00               | 0.00                 | 0.00                 | 207.66          | 1058.47                 | 13-oct-13  | 82,559.50                 |
| 14-oct-13  | 903.10               | 226.20          | 653.16            | 15.69         | 0.00        | 121.24           | 111.20          | 23.55         | 0.00               | 0.00                 | 0.00                 | 252.17          | 1177.00                 | 14-oct-13  | 89,628.00                 |
| 15-oct-13  | 866.67               | 187.85          | 660.98            | 16.17         | 0.00        | 117.07           | 107.21          | 23.22         | 0.00               | 0.00                 | 0.00                 | 256.27          | 1180.93                 | 15-oct-13  | 94,545.00                 |
| 16-oct-13  | 869.27               | 201.77          | 661.03            | 16.01         | 0.00        | 112.21           | 104.71          | 11.82         | 0.00               | 0.00                 | 0.00                 | 256.49          | 1162.26                 | 16-oct-13  | 106,801.50                |
| 17-oct-13  | 860.28               | 224.88          | 660.88            | 16.40         | 0.00        | 117.39           | 99.74           | 13.24         | 0.00               | 0.00                 | 0.00                 | 258.15          | 1165.80                 | 17-oct-13  | 104,511.00                |
| 18-oct-13  | 881.90               | 232.14          | 651.07            | 17.07         | 0.00        | 122.24           | 113.86          | 14.37         | 0.04               | 0.00                 | 0.00                 | 258.88          | 1177.52                 | 18-oct-13  | 104,951.00                |
| 19-oct-13  | 876.64               | 233.74          | 645.21            | 16.88         | 0.00        | 117.48           | 93.23           | 13.72         | 0.04               | 40.12                | 0.00                 | 249.04          | 1175.72                 | 19-oct-13  | 103,875.00                |
| 20-oct-13  | 846.24               | 167.33          | 624.58            | 16.17         | 0.00        | 100.45           | 85.15           | 14.07         | 0.04               | 45.78                | 0.09                 | 203.30          | 1089.62                 | 20-oct-13  | 106,352.00                |
| 21-oct-13  | 842.84               | 237.55          | 624.04            | 16.52         | 0.00        | 122.12           | 111.61          | 14.35         | 0.04               | 45.64                | 0.47                 | 249.79          | 1184.58                 | 21-oct-13  | 104,844.00                |
| 22-oct-13  | 724.04               | 310.13          | 530.68            | 15.27         | 0.00        | 121.07           | 110.94          | 14.11         | 0.04               | 45.49                | 0.06                 | 282.97          | 1120.62                 | 22-oct-13  | 70,317.00                 |
| 23-oct-13  | 917.84               | 283.99          | 638.42            | 16.16         | 0.00        | 117.29           | 104.25          | 14.17         | 0.09               | 45.22                | 3.27                 | 288.41          | 1227.27                 | 23-oct-13  | 101,639.00                |
| 24-oct-13  | 905.31               | 265.49          | 640.05            | 16.46         | 0.00        | 120.66           | 110.27          | 13.47         | 0.09               | 7.14                 | 3.28                 | 284.38          | 1195.80                 | 24-oct-13  | 106,552.00                |
| 25-oct-13  | 869.07               | 254.48          | 623.01            | 16.15         | 0.00        | 121.14           | 111.41          | 14.02         | 0.04               | 0.00                 | 0.00                 | 283.29          | 1169.06                 | 25-oct-13  | 90,960.00                 |
| 26-oct-13  | 945.89               | 243.12          | 624.14            | 16.45         | 0.00        | 119.08           | 112.97          | 13.38         | 0.04               | 0.00                 | 9.11                 | 254.98          | 1150.15                 | 26-oct-13  | 103,346.00                |
| 27-oct-13  | 853.19               | 121.06          | 624.33            | 15.34         | 0.00        | 99.10            | 87.76           | 8.93          | 0.04               | 0.00                 | 4.62                 | 198.56          | 1038.69                 | 27-oct-13  | 95,248.00                 |
| 28-oct-13  | 796.82               | 168.24          | 624.52            | 15.52         | 0.00        | 113.43           | 111.13          | 13.21         | 0.04               | 1.83                 | 0.00                 | 253.22          | 1132.90                 | 28-oct-13  | 97,039.00                 |
| 29-oct-13  | 777.81               | 165.70          | 624.32            | 15.20         | 0.00        | 118.87           | 111.71          | 11.57         | 0.09               | 0.00                 | 0.00                 | 254.00          | 1135.76                 | 29-oct-13  | 92,428.50                 |
| 30-oct-13  | 783.32               | 176.05          | 624.59            | 15.07         | 0.00        | 120.37           | 110.87          | 12.70         | 0.09               | 0.00                 | 0.00                 | 253.84          | 1137.54                 | 30-oct-13  | 98,334.00                 |
| 31-oct-13  | 810.71               | 197.21          | 624.43            | 15.70         | 0.00        | 121.63           | 111.49          | 14.16         | 0.07               | 0.00                 | 4.48                 | 265.61          | 1157.58                 | 31-oct-13  | 104,563.00                |
| <b>TOTAL</b>   | <b>26,429.69</b>     | <b>7,026.64</b> | <b>19,382.13</b>  | <b>479.34</b> | <b>0.00</b> | <b>3,596.59</b>  | <b>3,383.21</b> | <b>559.29</b> | <b>0.81</b>        | <b>231.21</b>        | <b>25.39</b>         | <b>8,070.16</b> | <b>35,728.12</b>        | <b>TOTAL</b>   | <b>2,759,492.49</b>       |
| <b>PROMEDIO</b>  | <b>852.57</b>        | <b>226.67</b>   | <b>625.23</b>     | <b>15.46</b>  | <b>0.00</b> | <b>116.02</b>    | <b>109.14</b>   | <b>18.04</b>  | <b>0.03</b>        | <b>7.46</b>          | <b>0.82</b>          | <b>260.33</b>   | <b>1,152.52</b>         | <b>PROMEDIO</b>  | <b>89,015.89</b>          |

(\*) Los datos de volúmenes de Gas Natural y Líquidos de Gas Natural son operativos y no necesariamente coinciden con datos fiscalizados.

<sup>1</sup> MMSCFD: Millones de Pies Cubicos Estandar por Día

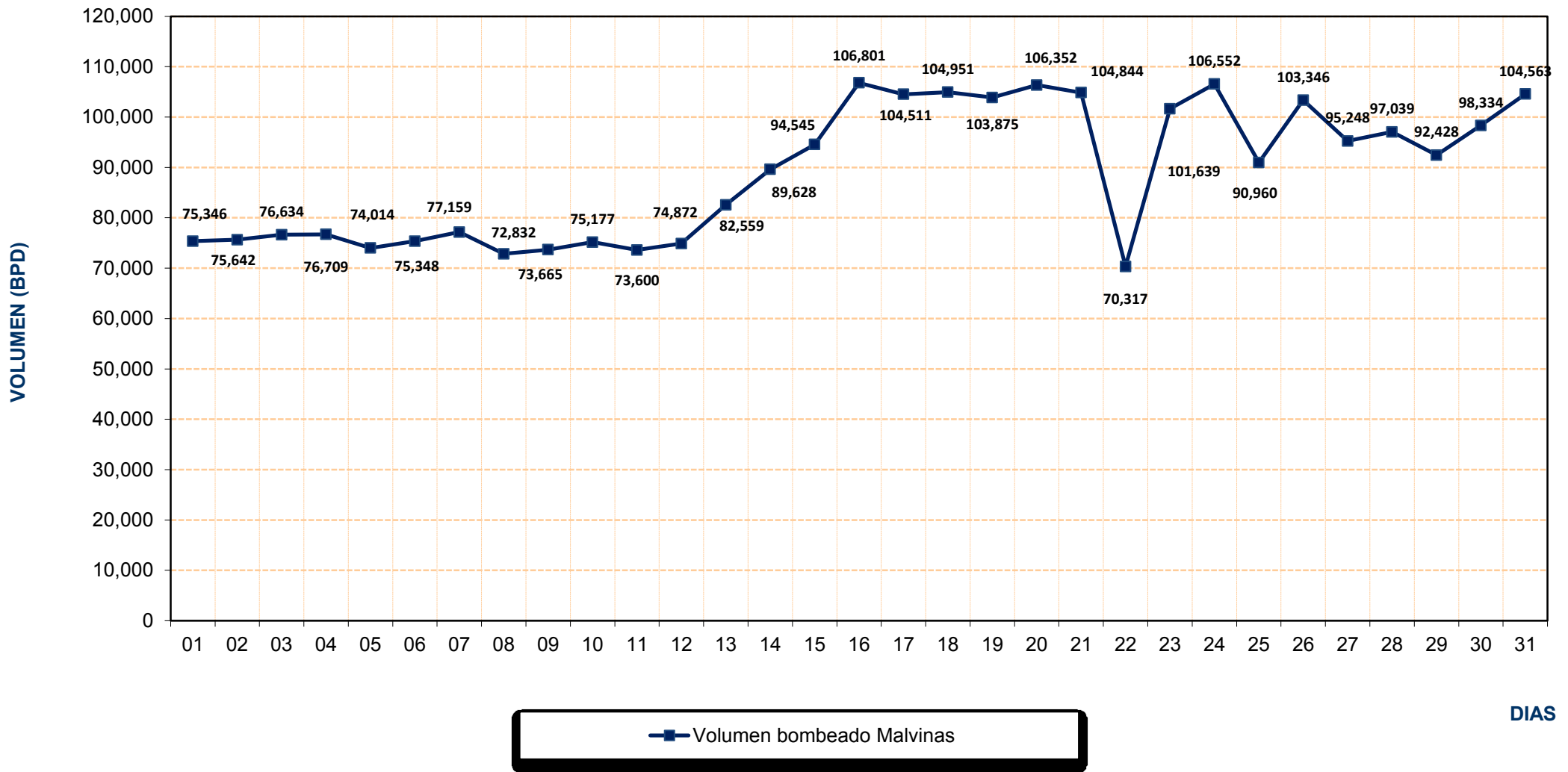
<sup>2</sup> BPD: Barriles Por Día

## REPORTE OPERATIVO\* DEL SISTEMA DE TRANSPORTE DE GAS NATURAL (GN) DURANTE OCTUBRE 2013



\* Los valores podría diferir del Volumen Fiscalizado.

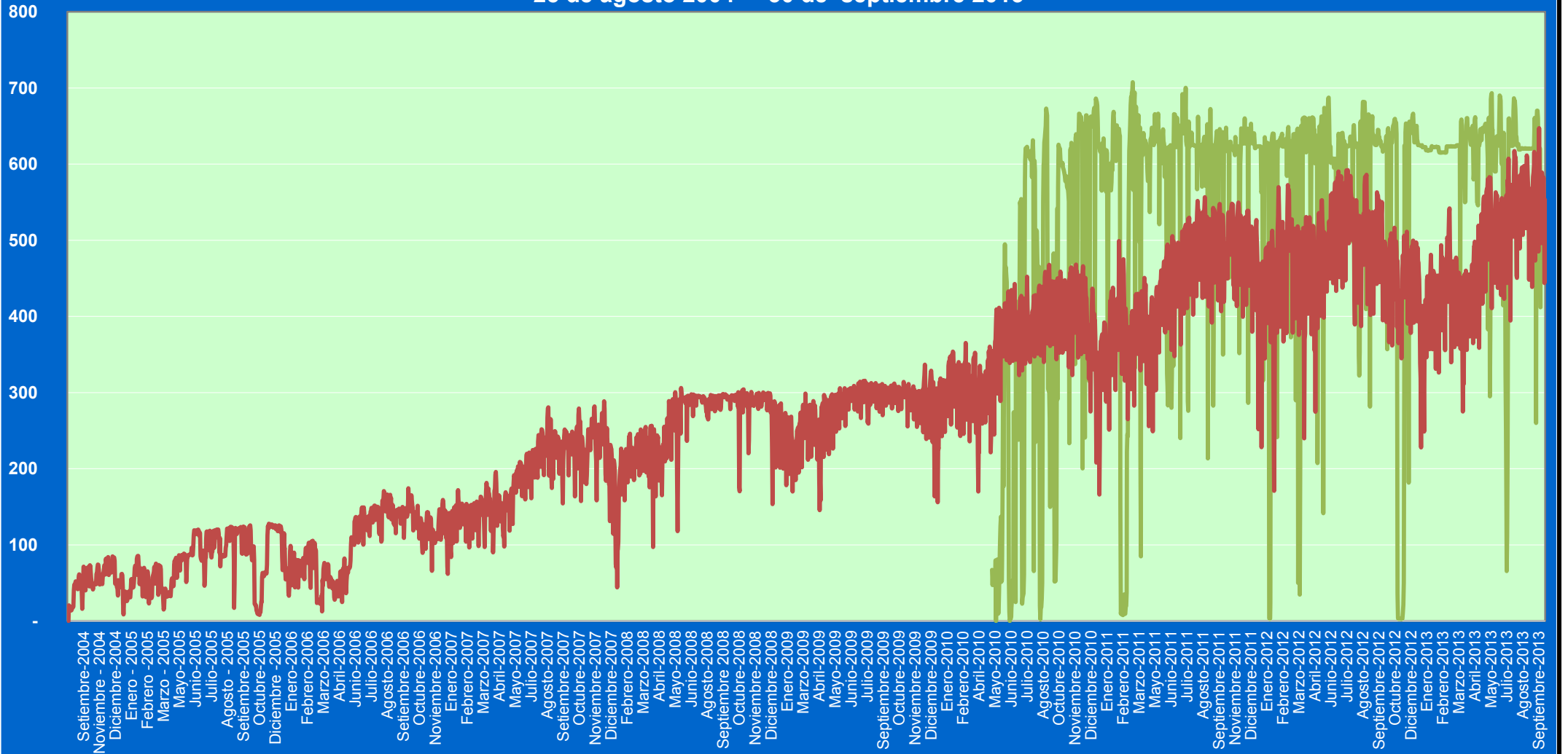
## REPORTE OPERATIVO\* DEL SISTEMA DE TRANSPORTE DE LÍQUIDOS DE GAS NATURAL (LGN) DURANTE OCTUBRE 2013



\* Los valores podría diferir del Volumen Fiscalizado.

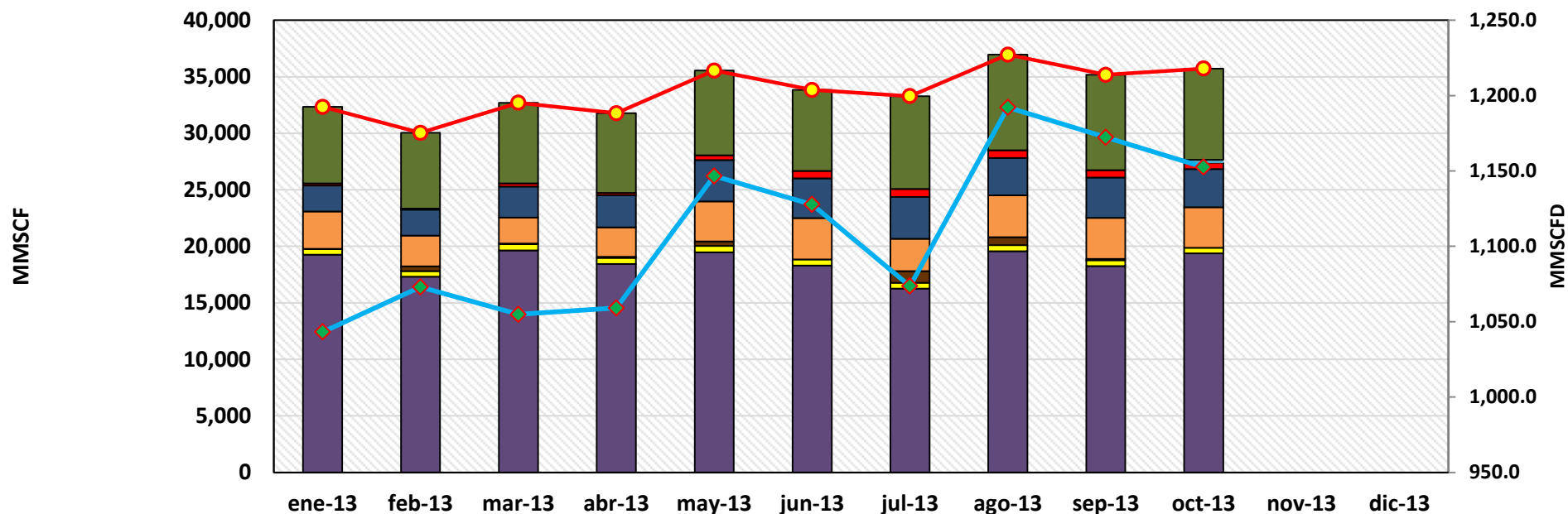
Volumen  
(MMSCFD)

Volumen de Gas Natural entregado diariamente por TGP en  
millones de pies cúbicos diarios (MMSCFD)  
25 de agosto 2004 - 30 de septiembre 2013



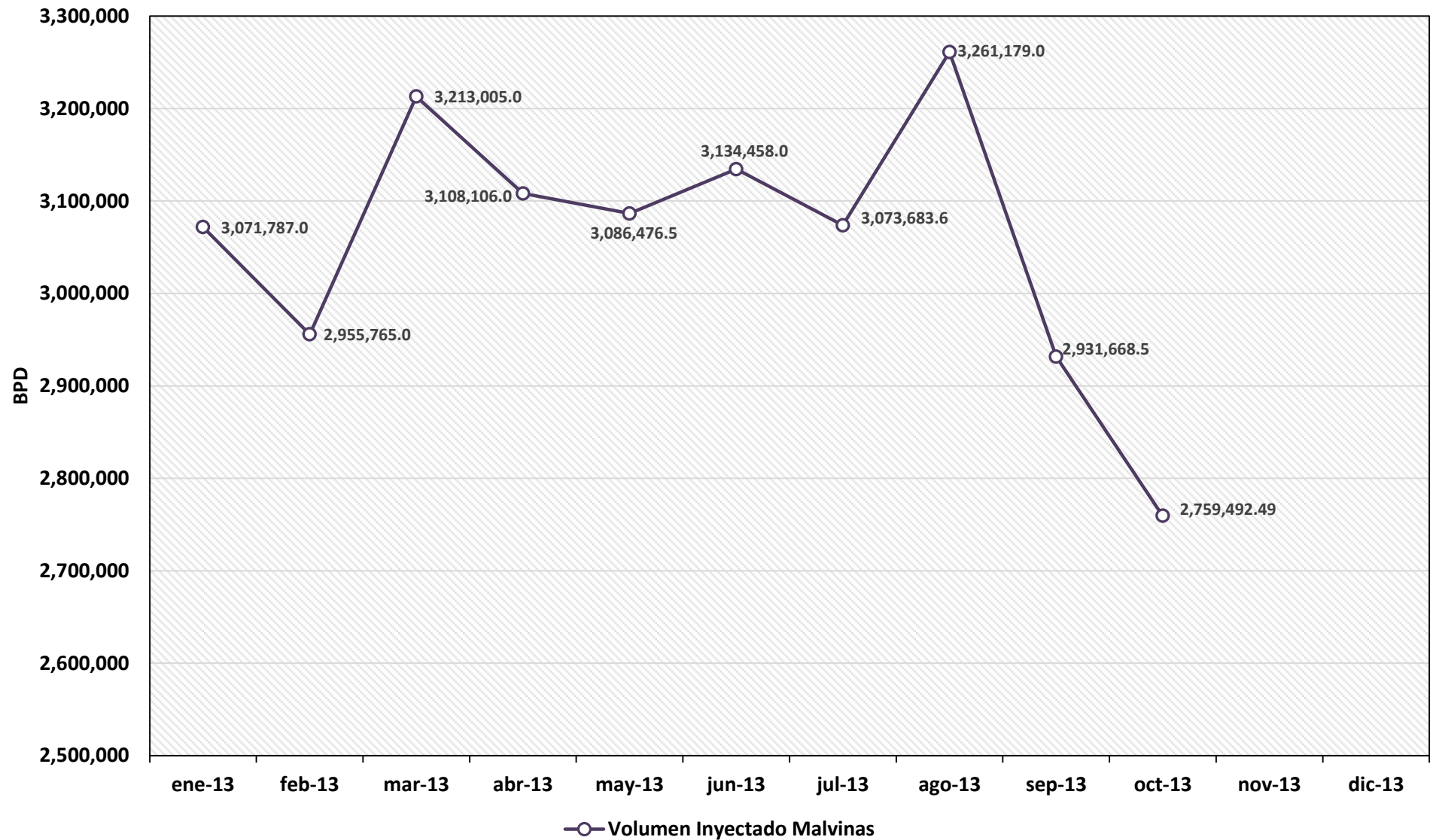
— Planta Melchorita — B.O.O.T

## REPORTE MENSUAL DE VOLUMENES ENTREGADOS EN EL SISTEMA DE TRANSPORTE DE GAS NATURAL (GN) DURANTE EL 2013



|                                      | ene-13   | feb-13   | mar-13   | abr-13   | may-13   | jun-13   | jul-13   | ago-13   | sep-13   | oct-13    | nov-13 | dic-13 |
|--------------------------------------|----------|----------|----------|----------|----------|----------|----------|----------|----------|-----------|--------|--------|
| Lurín                                | 6,759.9  | 6,706.8  | 7,129.4  | 7,055.3  | 7,496.1  | 7,171.9  | 8,202.1  | 8,456.6  | 8,431.6  | 8,070.2   |        |        |
| Chilca - Fenix Power                 |          |          |          |          |          |          |          |          |          | 25.4      |        |        |
| Chilca -Termochilca                  |          |          |          |          |          |          |          |          |          | 231.2     |        |        |
| Contugas - Chincha                   |          |          |          |          |          |          |          |          |          | 0.8       |        |        |
| Egesur-Egasa                         | 194.9    | 85.9     | 287.9    | 170.5    | 428.0    | 639.6    | 714.7    | 691.9    | 665.7    | 559.3     |        |        |
| Kallpa                               | 2,305.4  | 2,306.4  | 2,736.0  | 2,862.5  | 3,644.9  | 3,523.3  | 3,707.0  | 3,297.7  | 3,558.3  | 3,383.2   |        |        |
| Chilca-Enersur                       | 3,291.7  | 2,719.9  | 2,294.1  | 2,604.6  | 3,535.9  | 3,659.7  | 2,852.2  | 3,699.1  | 3,626.3  | 3,596.6   |        |        |
| Duke Energy                          | 29.1     | 417.9    | 63.3     | 106.3    | 412.3    | 0.0      | 1,018.0  | 709.4    | 121.5    | 0.0       |        |        |
| Humay                                | 501.3    | 488.9    | 543.9    | 525.8    | 558.2    | 537.3    | 519.7    | 546.4    | 500.6    | 479.3     |        |        |
| Planta Melchorita                    | 19,255.6 | 17,316.5 | 19,646.3 | 18,446.3 | 19,470.6 | 18,300.3 | 16,266.4 | 19,556.8 | 18,264.0 | 19,382.1  |        |        |
| Total Transportado GN                | 32,337.8 | 30,042.3 | 32,700.8 | 31,771.3 | 35,546.0 | 33,831.9 | 33,280.1 | 36,957.9 | 35,168.1 | 35,728.12 |        |        |
| Promedio Total Transportado (MMSCFD) | 1,043.2  | 1,072.9  | 1,054.9  | 1,059.0  | 1,146.6  | 1,127.7  | 1,073.6  | 1,192.2  | 1,172.3  | 1,152.52  |        |        |

## REPORTE MENSUAL DE VOLUMENES ENTREGADOS EN EL SISTEMA DE TRANSPORTE DE LIQUIDOS DE GAS NATURAL (LGN) DURANTE EL 2013



**VOLUMEN PROMEDIO DIARIO DE LÍQUIDOS DE GAS NATURAL TRANSPORTADO POR TGP EN  
BARRILES POR DÍA (BPD)  
Agosto 2004 - Octubre 2013**

